

ECRG1 Antibody

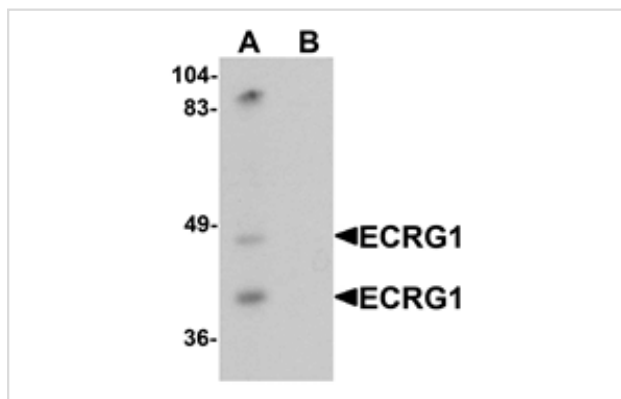
Catalog No: #25367

Orders: order@signalwayantibody.comSupport: tech@signalwayantibody.com

Description

Product Name	ECRG1 Antibody
Host Species	Rabbit
Clonality	Polyclonal
Purification	Affinity chromatography purified via peptide column
Applications	E WB
Species Reactivity	Hu Ms Rt
Specificity	At least two isoforms of ECRG1 are known to exist; ECRG1 antibody is predicted to not cross-react with other ECRG family members.
Immunogen Type	Peptide
Immunogen Description	Raised against a 16 amino acid peptide near the carboxy terminus of human ECRG1.
Target Name	ECRG1
Other Names	Esophageal cancer-susceptibility gene 1 protein, Airway trypsin-like protease 1, HATL1, HESP, TMPRSS11A
Accession No.	Q6ZMR5
Formulation	Supplied in PBS containing 0.02% sodium azide.
Storage	Can be stored at -20°C, stable for one year. As with all antibodies care should be taken to avoid repeated freeze thaw cycles. Antibodies should not be exposed to prolonged high temperatures.

Images



Western blot analysis of ECRG1 in mouse liver tissue lysate with ECRG1 antibody at 1 ug/mL in (A) the absence and (B) the presence of blocking peptide.

Background

Epidermal type-II transmembrane serine protease (ECRG1), also known as TMPRSS11A, is a member of a novel esophageal cancer-related gene family. It is a type-II transmembrane serine protease which may play a role in cellular senescence. It is expressed in esophagus, liver, colon and lung. Overexpression of ECRG1 inhibits cell growth and induces G1 cell cycle arrest. It is down-regulated in esophagus cancers (EC) and might play important roles in the initiation and progression of EC.

Note: This product is for in vitro research use only and is not intended for use in humans or animals.