

## CCDC55 Antibody

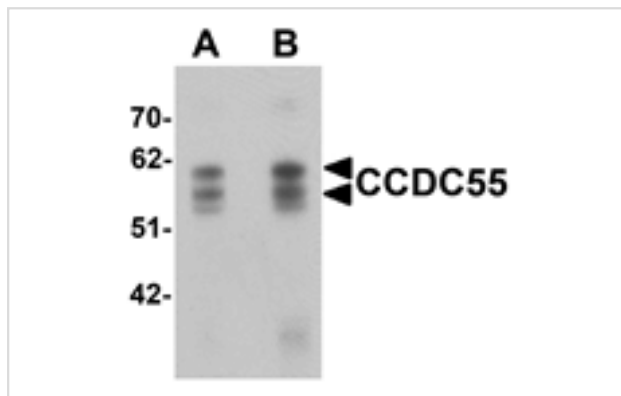
Catalog No: #25366

Orders: [order@signalwayantibody.com](mailto:order@signalwayantibody.com)Support: [tech@signalwayantibody.com](mailto:tech@signalwayantibody.com)

## Description

Product Name	CCDC55 Antibody
Host Species	Rabbit
Clonality	Polyclonal
Purification	Affinity chromatography purified via peptide column
Applications	E WB
Species Reactivity	Hu Ms Rt
Specificity	At least three isoforms are known to exist; this antibody will detect all three.
Immunogen Type	Peptide
Immunogen Description	Raised against a 16 amino acid peptide near the carboxy terminus of human CCDC55.
Target Name	CCDC55
Other Names	Coiled-coil domain-containing protein 55, HSPC095, NSrp70
Accession No.	NP_115517
Formulation	Supplied in PBS containing 0.02% sodium azide.
Storage	Can be stored at -20°C, stable for one year. As with all antibodies care should be taken to avoid repeated freeze thaw cycles. Antibodies should not be exposed to prolonged high temperatures.

## Images



Western blot analysis of CCDC55 in human brain tissue lysate with CCDC55 antibody at (A) 0.5 and (B) 1 ug/mL

## Background

CCDC55, also known as Nuclear speckle-related protein 70 (NSrp70), was initially identified by the NIH Mammalian Gene Collection. Nuclear speckles are known to be the storage sites of mRNA splicing regulators. CCDC55 has been suggested to modulate alternative pre-mRNA splicing *in vivo*. It co-localizes and physically interacts with the SR proteins SC35 and ASF/SF2, essential splicing factors which are required for constitutive splicing and can regulate alternative mRNA splicing. Loss of CCDC55 in mice leads to early embryonic lethality highlights the importance of the functional role of CCDC55.

Note: This product is for *in vitro* research use only and is not intended for use in humans or animals.