

DRGX Antibody

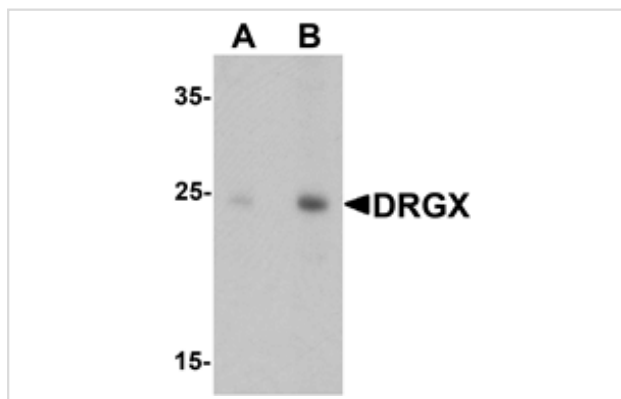
Catalog No: #25365

Orders: order@signalwayantibody.comSupport: tech@signalwayantibody.com

Description

Product Name	DRGX Antibody
Host Species	Rabbit
Clonality	Polyclonal
Purification	Affinity chromatography purified via peptide column
Applications	E WB
Species Reactivity	Hu Ms Rt
Specificity	At least two are known to exist; DRGX antibody is predicted to not cross-react with other Homeodomain proteins.
Immunogen Type	Peptide
Immunogen Description	Raised against a 19 amino acid peptide near the carboxy terminus of human DRGX.
Target Name	DRGX
Other Names	Dorsal root ganglia homeobox, DRG11, Paired-related homeobox protein-like 1, PRRXL1
Accession No.	NP_001073989
Formulation	Supplied in PBS containing 0.02% sodium azide.
Storage	Can be stored at -20°C, stable for one year. As with all antibodies care should be taken to avoid repeated freeze thaw cycles. Antibodies should not be exposed to prolonged high temperatures.

Images



Western blot analysis of DRGX in rat liver tissue lysate with DRGX antibody at (A) 1 and (B) 2 ug/mL.

Background

DRGX, also known as DRG11 or PRRXL1, is a paired homeodomain transcription factor, and was initially cloned from a differential hybridization screen aimed at identifying dorsal root ganglia (DRG)-specific genes. DRGX is a key regulator of the differentiation of the spinal cord neuronal circuit dedicated to the processing of nociceptive information. DRGX is also important for the formation of the whisker-related somatosensory maps in the principal sensory nucleus of the trigeminal nerve, thalamus and somatosensory cortex.

Note: This product is for in vitro research use only and is not intended for use in humans or animals.