

NEUCRIN Antibody

Catalog No: #25359

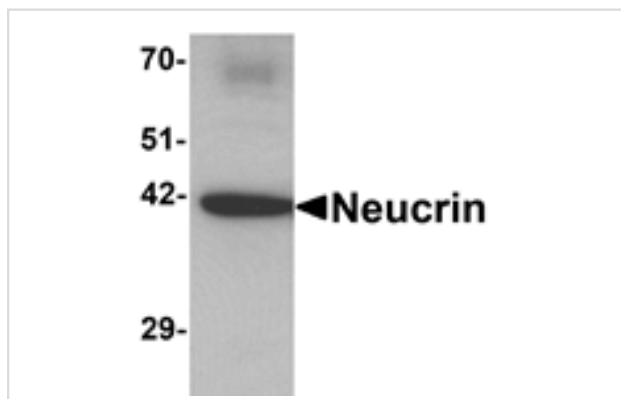
Orders: order@signalwayantibody.com

Support: tech@signalwayantibody.com

Description

Product Name	NEUCRIN Antibody
Host Species	Rabbit
Clonality	Polyclonal
Purification	Affinity chromatography purified via peptide column
Applications	E WB
Species Reactivity	Hu Ms Rt
Specificity	At least three isoforms of Neucrin are known to exist; this antibody will detect the two shorter isoforms. Neucrin antibody is predicted to not cross-react with RILP.
Immunogen Type	Peptide
Immunogen Description	Raised against a 17 amino acid peptide near the carboxy terminus of human Neucrin.
Target Name	NEUCRIN
Other Names	Draxin, dorsal repulsive axon guidance protein
Accession No.	BAG80561
Formulation	Supplied in PBS containing 0.02% sodium azide.
Storage	Can be stored at -20°C, stable for one year. As with all antibodies care should be taken to avoid repeated freeze thaw cycles. Antibodies should not be exposed to prolonged high temperatures.

Images



Western blot analysis of Neucrin in rat cerebellum tissue lysate with Neucrin antibody at 1 ug/mL.

Background

Neucrin, also known as Draxin, is a repulsive guidance protein for the spinal cord and forebrain commissures. It is thought to act as an antagonist of canonical Wnt signaling by inhibiting the stabilization of cytosolic beta-catenin. Ectopically expressed neucrin inhibited growth or caused misrouting of chick spinal cord commissural axons in vivo while Neucrin-null mice showed defasciculation of spinal cord commissural axons and an absence of all forebrain commissures. Other experiments in mice have shown that olfactory bulb axonal outgrowth is inhibited by Neucrin, suggesting that Neucrin functions as an inhibitory guidance cue for olfactory bulb axons.

Note: This product is for in vitro research use only and is not intended for use in humans or animals.