

DDA Antibody

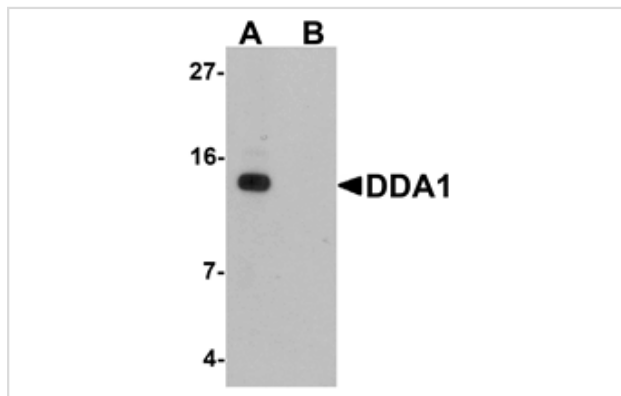
Catalog No: #25354

Orders: order@signalwayantibody.comSupport: tech@signalwayantibody.com

Description

Product Name	DDA Antibody
Host Species	Rabbit
Clonality	Polyclonal
Purification	Affinity chromatography purified via peptide column
Applications	E WB
Species Reactivity	Hu Ms Rt
Immunogen Type	Peptide
Immunogen Description	Raised against an 18 amino acid peptide near the carboxy terminus of human DDA1.
Target Name	DDA
Other Names	DET1 and DDB1 associated 1, PCIA1
Accession No.	NP_003253
Formulation	Supplied in PBS containing 0.02% sodium azide.
Storage	Can be stored at -20°C, stable for one year. As with all antibodies care should be taken to avoid repeated freeze thaw cycles. Antibodies should not be exposed to prolonged high temperatures.

Images



Western blot analysis of DDA1 in mouse heart tissue lysate with DDA1 antibody at 1 ug/mL in (A) the absence and (B) the presence of blocking peptide

Background

DDA1 (DET1 and DDB1 associated 1), along with DET1 and DDB1 and a member of the UBE2E group of canonical ubiquitin-conjugating enzymes, comprise DDD-E2 complexes, which interact with multiple ubiquitin E3 ligases. One of these E3 ligases is Cul4-containing E3 ligase complex CRL4. Cells depleted of DDA1 spontaneously accumulate double-stranded DNA breaks in a similar fashion as Cul4A-, Cul4B-, or WDR23-depleted cells, suggesting that DDA1 interacts with the CRL4 complex and may be involved in the ubiquitination and subsequent proteasomal degradation of target proteins.

Note: This product is for in vitro research use only and is not intended for use in humans or animals.