

Translin Antibody

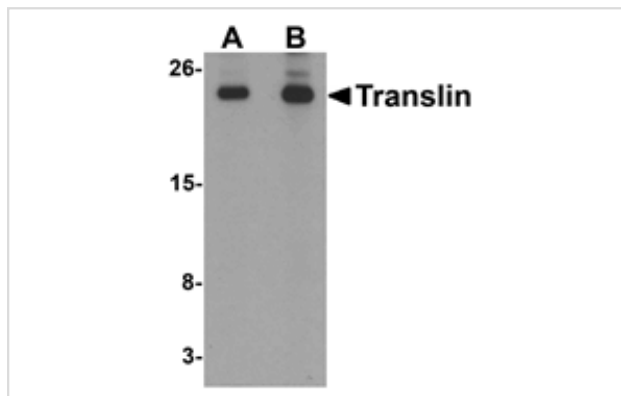
Catalog No: #25312

Orders: order@signalwayantibody.comSupport: tech@signalwayantibody.com

Description

Product Name	Translin Antibody
Host Species	Rabbit
Clonality	Polyclonal
Purification	Affinity chromatography purified via peptide column
Applications	E WB
Species Reactivity	Hu Ms Rt
Specificity	At least two isoforms of Translin are known to exist; this antibody will detect both.
Immunogen Type	Peptide
Immunogen Description	Raised against a 20 amino acid peptide near the carboxy terminus of human Translin.
Target Name	Translin
Other Names	Translin, TSN, RCHF, TBRBP, BCLF-1, REHF-1
Accession No.	NP_004613
Formulation	Supplied in PBS containing 0.02% sodium azide.
Storage	Can be stored at 4 °C, stable for one year. As with all antibodies care should be taken to avoid repeated freeze thaw cycles. Antibodies should not be exposed to prolonged high temperatures.

Images



Western blot analysis of Translin in rat lung tissue lysate with Translin antibody at (A) 0.5 and (B) 1 ug/mL

Background

Translin is a DNA-binding protein which specifically recognizes conserved target sequences at the breakpoint junction of chromosomal translocations. Translin polypeptides form a multimeric structure that is responsible for its DNA-binding activity. Recombination-associated motifs and translin-binding sites are present at recombination hotspots and may serve as indicators of breakpoints in genes which are fused by translocations. These binding activities may play a crucial role in chromosomal translocation in lymphoid neoplasms. Recent evidence suggests that in combination with a binding partner Trax, Translin binds RNA and mediates trafficking in neurons.

Note: This product is for in vitro research use only and is not intended for use in humans or animals.