

REQUIEM Antibody

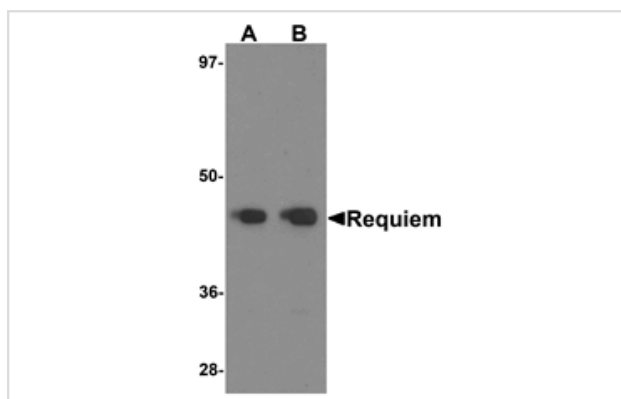
Catalog No: #25238

Orders: order@signalwayantibody.comSupport: tech@signalwayantibody.com

Description

Product Name	REQUIEM Antibody
Host Species	Rabbit
Clonality	Polyclonal
Purification	Affinity chromatography purified via peptide column
Applications	E WB
Species Reactivity	Hu Ms
Specificity	Requiem antibody is predicted to not cross-react with other DPF protein family members.
Immunogen Type	Peptide
Immunogen Description	Raised against an 18 amino acid peptide near the carboxy terminus of human Requiem.
Target Name	REQUIEM
Other Names	REQ, UBID4, ubi-d4, DPF2, double PHD fingers family 2
Accession No.	AAB81203
Formulation	Supplied in PBS containing 0.02% sodium azide.
Storage	Can be stored at -20°C, stable for one year. As with all antibodies care should be taken to avoid repeated freeze thaw cycles. Antibodies should not be exposed to prolonged high temperatures.

Images



Western blot analysis of Requiem in mouse kidney tissue lysate with Requiem antibody at 1 ug/mL.

Background

Requiem is a member of the d4 domain family, characterized by a zinc finger-like structural motif. This protein functions as a transcription factor which is necessary for the apoptotic response following deprivation of survival factors. It is expressed in numerous tissues in both cytosolic and nuclear regions and likely serves a regulatory role in rapid hematopoietic cell growth and turnover. Requiem has been found to act as an adaptor protein that links the NF- κ B and SWI/SNF chromatin remodeling factor and is considered a candidate gene for multiple endocrine neoplasia type I, an inherited cancer syndrome involving multiple parathyroid, enteropancreatic, and pituitary tumors.

Note: This product is for in vitro research use only and is not intended for use in humans or animals.