

## KLOTTHO Antibody

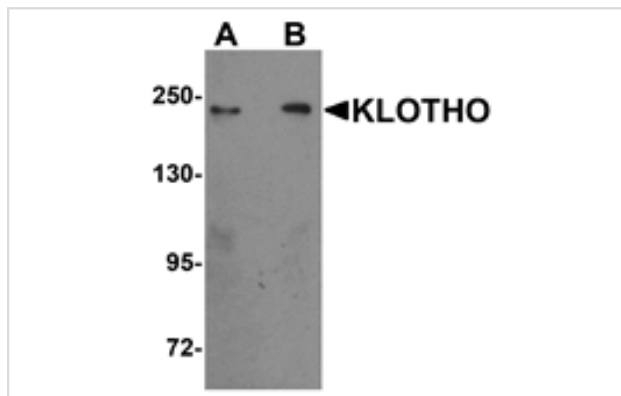
Catalog No: #25237

Orders: [order@signalwayantibody.com](mailto:order@signalwayantibody.com)Support: [tech@signalwayantibody.com](mailto:tech@signalwayantibody.com)

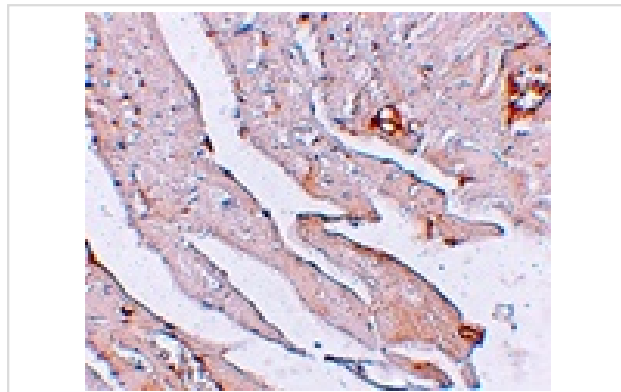
## Description

Product Name	KLOTTHO Antibody
Host Species	Rabbit
Clonality	Polyclonal
Purification	Affinity chromatography purified via peptide column
Applications	E WB IHC
Species Reactivity	Hu Ms Rt
Specificity	Three isoforms of KLOTTHO are known to exist.
Immunogen Type	Peptide
Immunogen Description	Raised against a 16 amino acid peptide near the center of human KLOTTHO.
Target Name	KLOTTHO
Other Names	KL, KLOTTHO
Accession No.	NP_004786
Formulation	Supplied in PBS containing 0.02% sodium azide.
Storage	Can be stored at -20°C, stable for one year. As with all antibodies care should be taken to avoid repeated freeze thaw cycles. Antibodies should not be exposed to prolonged high temperatures.

## Images



Western blot analysis of KLOTTHO in rat heart tissue lysate with KLOTTHO antibody at (A) 1 and (B) 2 ug/mL.



Immunohistochemistry of KLOTTHO in mouse heart tissue with KLOTTHO antibody at 2.5 ug/mL.

## Background

---

KLOTHO is the systemic anti-aging hormone within the glycosidase1 superfamily. It encodes a type I membrane protein that is abundant in the kidney and brain. In mice, a deficiency in KLOTHO expression leads to various systemic phenotypes resembling human aging such as arteriosclerosis, osteoporosis, and skin atrophy together with growth retardation, short life-span and infertility. Transgenic mice overexpressing KLOTHO have an extended life span by inhibiting insulin/IGF1 signaling. KLOTHO is involved in the regulation of calcium/phosphorus homeostasis by inhibiting the synthesis of active vitamin D and identified as a potential tumor suppressor.

---

Note: This product is for in vitro research use only and is not intended for use in humans or animals.