

SYNPO Antibody

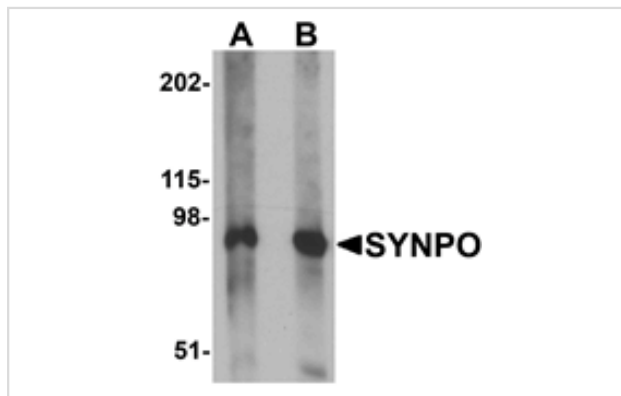
Catalog No: #25217

Orders: order@signalwayantibody.comSupport: tech@signalwayantibody.com

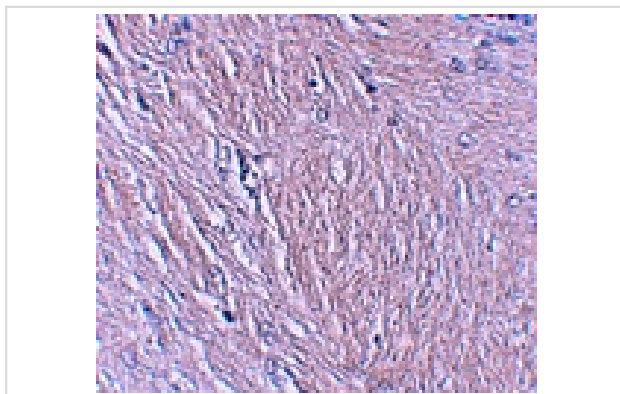
Description

Product Name	SYNPO Antibody
Host Species	Rabbit
Clonality	Polyclonal
Purification	Affinity chromatography purified via peptide column
Applications	E WB IHC
Species Reactivity	Hu Ms Rt
Immunogen Type	Peptide
Immunogen Description	Raised against a 17 amino acid peptide near the carboxy terminus of human SYNPO.
Target Name	SYNPO
Other Names	Synaptopodin
Accession No.	NP_001159680
Formulation	Supplied in PBS containing 0.02% sodium azide.
Storage	Can be stored at -20°C, stable for one year. As with all antibodies care should be taken to avoid repeated freeze thaw cycles. Antibodies should not be exposed to prolonged high temperatures.

Images



Western blot analysis of SYNPO in rat brain tissue lysate with SYNPO antibody at (A) 1 and (B) 2 ug/mL.



Immunohistochemistry of SYNPO in human brain tissue with SYNPO antibody at 2.5 ug/mL.

Background

SYNPO, also known as synaptopodin, is an actin-associated protein in telencephalic dendrites and renal podocytes. SYNPO is tightly associated with the dendritic spine apparatus, and mice lacking the SYNPO gene lack the apparatus. These SYNPO-null mice also demonstrate an impaired ability to express long-term potentiation as well as deficits in spatial memory tasks, indicating that SYNPO is involved in the regulation of synaptic plasticity. Recent studies suggest that SYNPO is linked to neuronal calcium stores and plays a role in the calcium store-associated ability of neurons to undergo long-term plasticity.

Note: This product is for in vitro research use only and is not intended for use in humans or animals.