

BANP Antibody

Catalog No: #25189

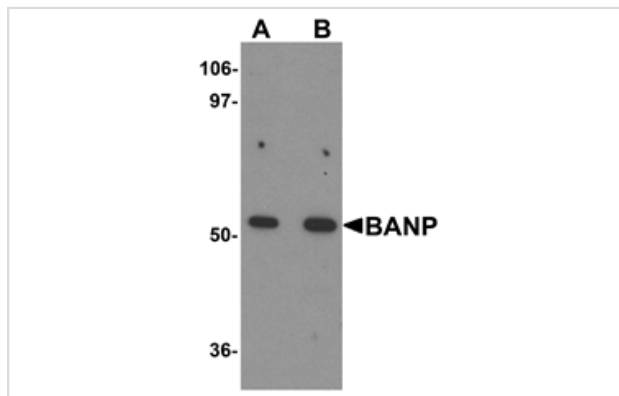
Orders: order@signalwayantibody.com

Support: tech@signalwayantibody.com

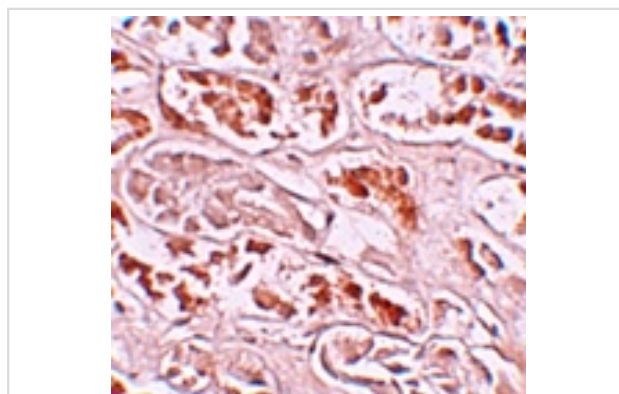
Description

Product Name	BANP Antibody
Host Species	Rabbit
Clonality	Polyclonal
Purification	Affinity chromatography purified via peptide column
Applications	E WB IHC
Species Reactivity	Hu Ms Rt
Immunogen Type	Peptide
Immunogen Description	Raised against a 14 amino acid peptide near the center of human BANP.
Target Name	BANP
Other Names	BTG3 associated nuclear protein, BEND1, SMAR1, SMARBP1
Accession No.	NP_001167014
Formulation	Supplied in PBS containing 0.02% sodium azide.
Storage	Can be stored at -20°C, stable for one year. As with all antibodies care should be taken to avoid repeated freeze thaw cycles. Antibodies should not be exposed to prolonged high temperatures.

Images



Western blot analysis of BANP in mouse kidney tissue lysate with BANP antibody at (A) 1 and (B) 2 ug/mL.



Immunohistochemistry of BANP in human kidney tissue with BANP antibody at 10 ug/mL.

Background

BANP was initially identified as a binding protein to BTG3 in a yeast two-hybrid screen. BANP acts as a tumor suppressor by stabilizing p53 expression and leading to cell cycle arrest. p53 in turn binds to upstream elements of the BANP promoter, thereby forming a feedback loop. BANP is down-regulated in advanced stages of human breast cancer, and its overexpression in breast cancer cell lines inhibits their ability to metastasize by modulating TGF-beta signaling. Furthermore, BANP can modulate NF-kB transactivation and can inhibit tumorigenesis by regulating NF-kB target genes. Recent experiments have shown that BANP can also repress HIV-1 LTR mediated transcription by tethering the LTR matrix attachment region to nuclear matrix.

Note: This product is for in vitro research use only and is not intended for use in humans or animals.