

## ApoA4 Antibody

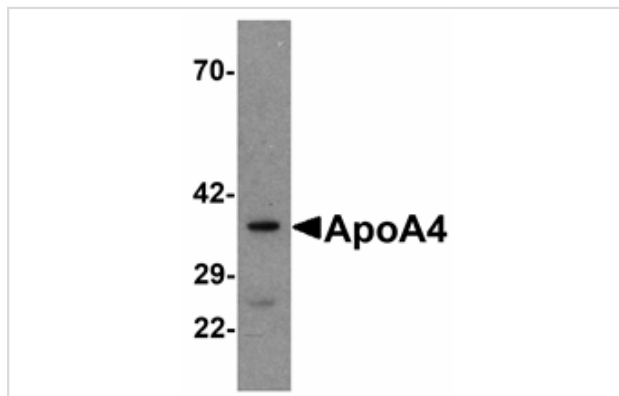
Catalog No: #25173

Orders: [order@signalwayantibody.com](mailto:order@signalwayantibody.com)Support: [tech@signalwayantibody.com](mailto:tech@signalwayantibody.com)

## Description

Product Name	ApoA4 Antibody
Host Species	Rabbit
Clonality	Polyclonal
Purification	Affinity chromatography purified via peptide column
Applications	E WB
Species Reactivity	Hu C
Immunogen Type	Peptide
Immunogen Description	Raised against a 15 amino acid peptide near the carboxy terminus of human ApoA4.
Target Name	ApoA4
Other Names	Apolipoprotein A4, ApoA-
Accession No.	NCBI accession No. AAA51744
Formulation	Supplied in PBS containing 0.02% sodium azide.
Storage	Can be stored at -20°C, stable for one year. As with all antibodies care should be taken to avoid repeated freeze thaw cycles. Antibodies should not be exposed to prolonged high temperatures.

## Images



Western blot analysis of ApoA4 in human liver tissue lysate with ApoA4 antibody at 1 ug/mL .

## Background

Apolipoprotein A4 (also known as ApoA-IV) is a plasma protein that is an O-linked glycoprotein after proteolytic processing. ApoA4 is a major constituent of HDL and it also can be found on the surface of newly synthesized chylomicrons. The physiological function of ApoA4 is not completely identified so far, but evidence from several *in vitro* studies indicate that this apolipoprotein is involved in several steps of the reverse cholesterol transport pathway, which transports cholesterol from peripheral cells back to the liver.

Note: This product is for *in vitro* research use only and is not intended for use in humans or animals.