

C-raf Antibody

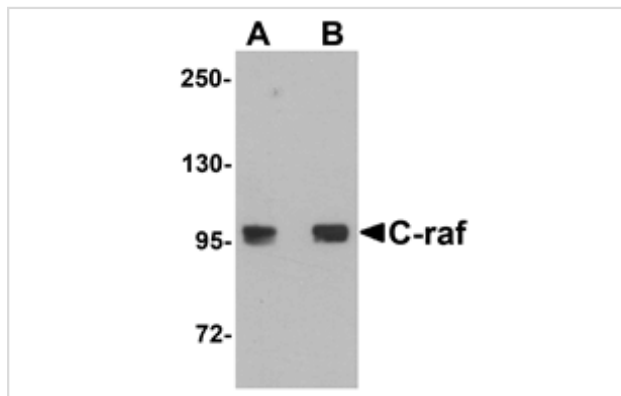
Catalog No: #25129

Orders: order@signalwayantibody.comSupport: tech@signalwayantibody.com

Description

Product Name	C-raf Antibody
Host Species	Rabbit
Clonality	Polyclonal
Purification	Affinity chromatography purified via peptide column
Applications	E WB
Species Reactivity	Hu Ms Rt
Immunogen Type	Peptide
Immunogen Description	Raised against an 19 amino acid peptide near the amino terminus of human C-raf.
Target Name	C-raf
Other Names	v-raf murine sarcoma viral oncogene homolog 1, raf-1, NS5
Accession No.	NP_002871
Formulation	Supplied in PBS containing 0.02% sodium azide.
Storage	Can be stored at -20°C, stable for one year. As with all antibodies care should be taken to avoid repeated freeze thaw cycles. Antibodies should not be exposed to prolonged high temperatures.

Images



Western blot analysis of C-raf in 3T3 cell lysate with C-raf antibody at (A) 0.5 and (B) 1 ug/mL.

Background

C-raf is the cellular homolog of viral raf gene (v-raf) and encodes a MAP kinase kinase kinase (MAP3K), which functions downstream of the Ras family of membrane associated GTPases. Once activated, C-raf phosphorylates and activates the protein kinases MEK1 and MEK2, which in turn phosphorylate and activate the serine/threonine specific protein kinases, ERK1 and ERK2. These activated ERKs are pleiotropic effectors of cell physiology and play an important role in the control of gene expression involved in the cell division cycle, apoptosis, cell differentiation and cell migration. Mutations in this gene are associated with Noonan syndrome 5 and LEOPARD syndrome 2.

Note: This product is for in vitro research use only and is not intended for use in humans or animals.