

## B-raf Antibody

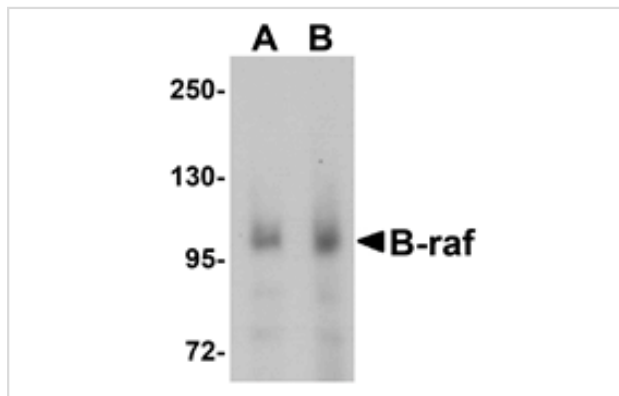
Catalog No: #25128

Orders: [order@signalwayantibody.com](mailto:order@signalwayantibody.com)Support: [tech@signalwayantibody.com](mailto:tech@signalwayantibody.com)

## Description

Product Name	B-raf Antibody
Host Species	Rabbit
Clonality	Polyclonal
Purification	Affinity chromatography purified via peptide column
Applications	E WB
Species Reactivity	Hu Ms Rt
Immunogen Type	Peptide
Immunogen Description	Raised against an 18 amino acid peptide near the center of human B-raf.
Target Name	B-raf
Other Names	v-raf murine sarcoma viral oncogene homolog B1, proto-oncogene B-raf, p94
Accession No.	P15056
Formulation	Supplied in PBS containing 0.02% sodium azide.
Storage	Can be stored at -20°C, stable for one year. As with all antibodies care should be taken to avoid repeated freeze thaw cycles. Antibodies should not be exposed to prolonged high temperatures.

## Images



Western blot analysis of B-raf in human brain tissue lysate with B-raf antibody at (A) 1 and (B) 2 ug/mL.

## Background

B-raf belongs to the raf/mil family of serine/threonine protein kinases and plays a role in regulating the MAP kinase/ERKs signaling pathway, which affects cell division, differentiation, and secretion. The Ras/Raf/MEK/ERK and Ras/PI3K/PTEN/Akt pathways interact with each other to regulate growth and in some cases tumorigenesis. Mutations in B-raf have been associated with several cancers, including non-Hodgkin lymphoma, colorectal cancer, malignant melanoma, thyroid carcinoma, non-small cell lung carcinoma, and adenocarcinoma of lung, leading to speculation on the possibility of B-raf as a therapeutic target for treating cancers. Mutations in this gene have also been associated with cardiofaciocutaneous syndrome (CFCS), a disease characterized by heart defects, mental retardation and a distinctive facial appearance.

Note: This product is for in vitro research use only and is not intended for use in humans or animals.