

## FAM82A1 Antibody

Catalog No: #25096

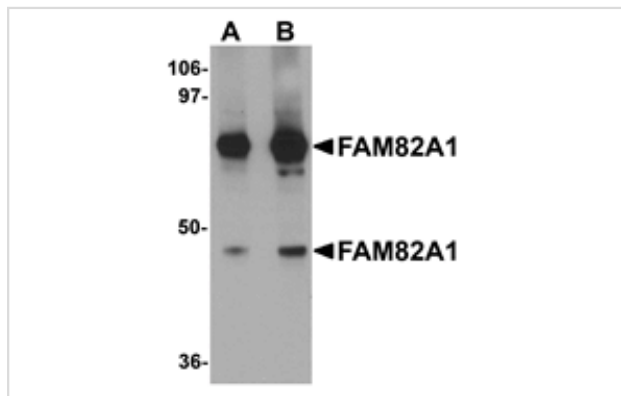
Orders: order@signalwayantibody.com

Support: tech@signalwayantibody.com

## Description

Product Name	FAM82A1 Antibody
Host Species	Rabbit
Clonality	Polyclonal
Purification	Affinity chromatography purified via peptide column
Applications	E WB ICC
Species Reactivity	Hu Ms Rt
Immunogen Type	Peptide
Immunogen Description	Raised against a 16 amino acid peptide near the amino terminus of human FAM82A1.
Target Name	FAM82A1
Other Names	Family with sequence similarity 82 member A1, RMD2, RMD4, BLOCK18
Accession No.	NP_653314
Formulation	Supplied in PBS containing 0.02% sodium azide.
Storage	Can be stored at -20°C, stable for one year. As with all antibodies care should be taken to avoid repeated freeze thaw cycles. Antibodies should not be exposed to prolonged high temperatures.

## Images



Western blot analysis of FAM82A1 in K562 cell lysate with FAM82A1 antibody at (A) 1 and (B) 2 ug/mL.



Immunocytochemistry of ENC-2 in Jurkat cells with ENC-2 antibody at 5 ug/mL.

## Background

The human protein FAM82A1, also known as regulator of microtubule dynamics 2 (RMD2), was one of three proteins identified as related to a family of microtubule-associated proteins in *C. elegans*. FAM82A1 contains multiple coiled-coil domains and localize to the spindle microtubules and spindle poles during cell division. During interphase, RMD2 localizes to the cytoplasm with protein observed in the microtubule lattice and perinuclear region.

---

Note: This product is for in vitro research use only and is not intended for use in humans or animals.