

Maelstrom Antibody

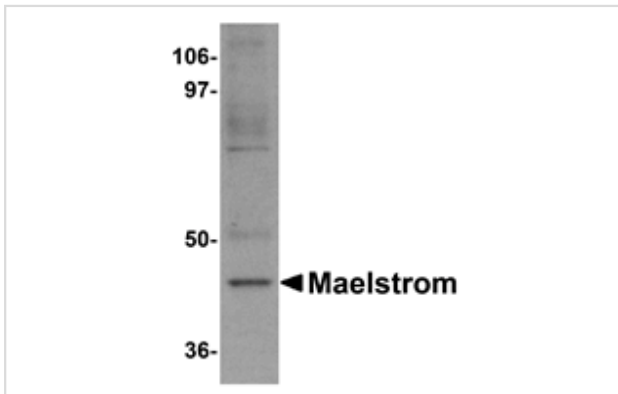
Catalog No: #25082

Orders: order@signalwayantibody.comSupport: tech@signalwayantibody.com

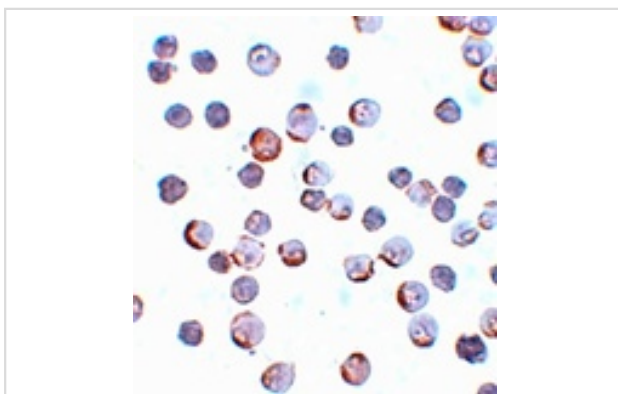
Description

Product Name	Maelstrom Antibody
Host Species	Rabbit
Clonality	Polyclonal
Purification	Affinity chromatography purified via peptide column
Applications	E WB ICC
Species Reactivity	Hu Ms Rt
Immunogen Type	Peptide
Immunogen Description	Raised against a 16 amino acid peptide near the carboxy terminus of human Maelstrom.
Target Name	Maelstrom
Other Names	Mael, RP11-102C16.1
Accession No.	AAY82463
Formulation	Supplied in PBS containing 0.02% sodium azide.
Storage	Can be stored at -20°C, stable for one year. As with all antibodies care should be taken to avoid repeated freeze thaw cycles. Antibodies should not be exposed to prolonged high temperatures.

Images



Western blot analysis of Maelstrom in HeLa cell lysate with Maelstrom antibody at 1 ug/mL.



Immunocytochemistry of Maelstrom in HeLa cells with Maelstrom antibody at 5 ug/mL.

Background

The mammalian homolog of the Drosophila protein Maelstrom is expressed in the male germline and localizes to the sex body in spermatocytes and the chromatoid body in round spermatids. Similar to its expression in Drosophila, Maelstrom is a component of nuages, a germ-cell specific organelle and is thought to be essential for spermatogenesis and transposon repression during meiosis. In humans, Maelstrom has been found to be expressed only in the testis and in various cancer cell lines. Treatment of these cell lines with the demethylating agent 5β -Aza-2-Deoxycytidine significantly upregulated Maelstrom levels, indicating that its expression is regulated by DNA methylation.

Note: This product is for in vitro research use only and is not intended for use in humans or animals.