

TRESK Antibody

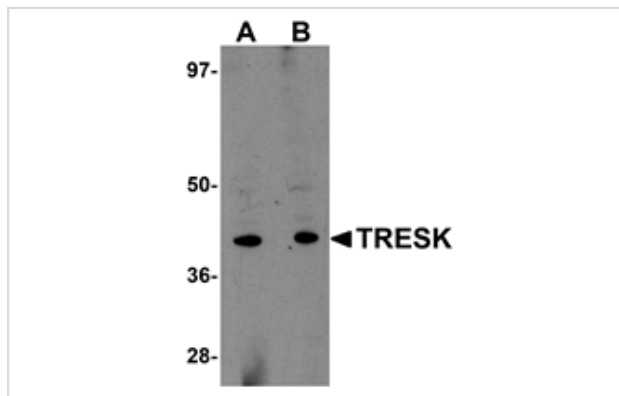
Catalog No: #25031

Orders: order@signalwayantibody.comSupport: tech@signalwayantibody.com

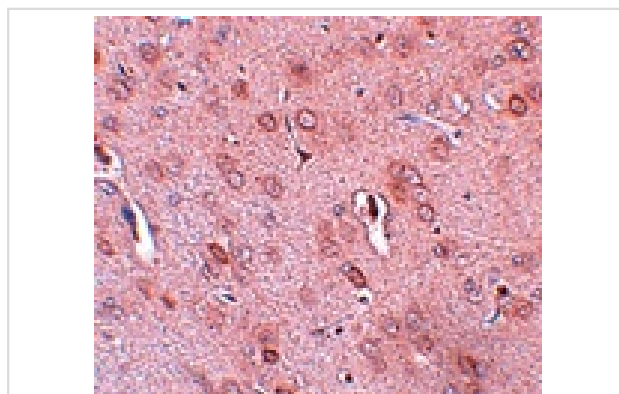
Description

Product Name	TRESK Antibody
Host Species	Rabbit
Clonality	Polyclonal
Purification	Affinity chromatography purified via peptide column
Applications	E WB IHC
Species Reactivity	Hu Ms Rt
Immunogen Type	Peptide
Immunogen Description	Raised against a 17 amino acid peptide from near the center of human TRESK.
Target Name	TRESK
Other Names	KCNK18, Potassium channel subfamily K member 18, TRIK, TRESK2
Accession No.	NP_862823
Formulation	Supplied in PBS containing 0.02% sodium azide.
Storage	Can be stored at -20°C, stable for one year. As with all antibodies care should be taken to avoid repeated freeze thaw cycles. Antibodies should not be exposed to prolonged high temperatures.

Images



Western blot analysis of TRESK in rat brain tissue lysate with TRESK antibody at (A) 1 and (B) 2 ug/mL.



Immunohistochemistry of TRESK in rat brain tissue with TRESK antibody at 5 ug/mL.

Background

TRESK (TWIK-related spinal cord K⁺ channel) is a two-pore domain K⁺ channel that induces outward rectification and functions as a background K⁺ channel that is abundantly expressed in the spinal cord, thymus, spleen, and leukemic T-lymphocytes. TRESK is activated by increased cytoplasmic calcium concentration through calcineurin as well as by acetylcholine and histamine. It has been suggested that TRESK is linked to acute and chronic pain by activation of calcineurin. Other studies indicate that TRESK may play a role in the regulation of T-cell function and could be an excellent target to treat T-cell originated immune dysfunction.

Note: This product is for in vitro research use only and is not intended for use in humans or animals.