

PICALM Antibody

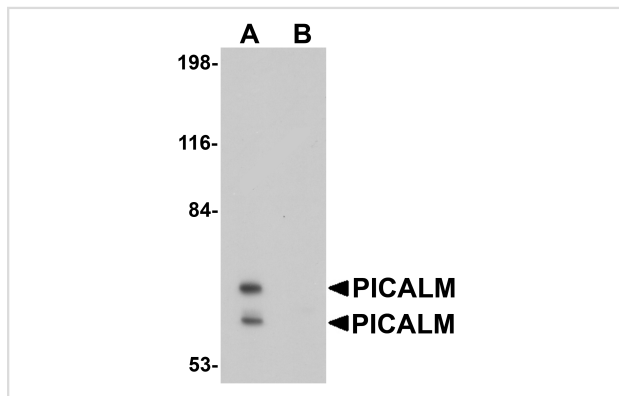
Catalog No: #25029

Orders: order@signalwayantibody.comSupport: tech@signalwayantibody.com

Description

Product Name	PICALM Antibody
Host Species	Rabbit
Clonality	Polyclonal
Purification	Affinity chromatography purified via peptide column
Applications	E WB
Species Reactivity	Hu Ms Rt
Immunogen Type	Peptide
Immunogen Description	Raised against a 15 amino acid peptide from near the amino terminus of human PICALM.
Target Name	PICALM
Other Names	Phosphatidylinositol-binding clathrin assembly protein, LAP, CALM, CLTH
Accession No.	NP_009097
Formulation	Supplied in PBS containing 0.02% sodium azide.
Storage	Can be stored at -20°C, stable for one year. As with all antibodies care should be taken to avoid repeated freeze thaw cycles. Antibodies should not be exposed to prolonged high temperatures.

Images



Western blot analysis of PICALM in EL4 cell lysate with PICALM antibody at 1 ug/mL in (A) the absence and (B) the presence of blocking peptide.

Background

PICALM, also known as the clathrin assembly lymphoid myeloid leukemia (CALM) protein, co-localizes with clathrin at clathrin-coated areas of the plasma membrane and in the Golgi area, and is thought to be an important component of the coated pit internalization machinery. Fusion proteins involving PICALM have been implicated in acute myeloid and T-cell acute lymphoblastic leukemia. PICALM is also expressed in neurons and is present at the synapse where it facilitates the endocytosis of the synaptic vesicle protein VAMP2. Recent studies have identified variants of PICALM associated with Alzheimer's disease and have suggested this protein may play a role in the endocytosis and recycling of the amyloid protein precursor (APP).

Note: This product is for in vitro research use only and is not intended for use in humans or animals.