

CLPH Antibody

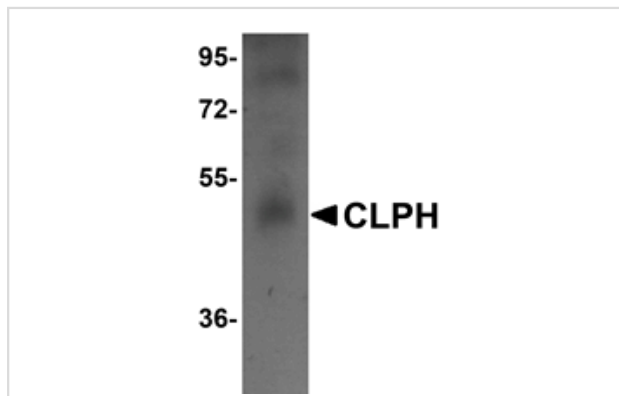
Catalog No: #25009

Orders: order@signalwayantibody.comSupport: tech@signalwayantibody.com

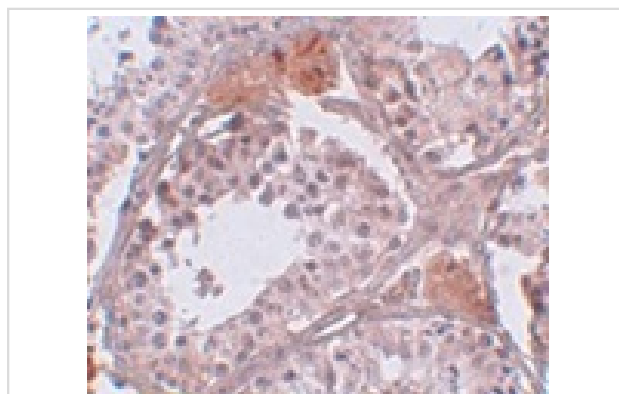
Description

Product Name	CLPH Antibody
Host Species	Rabbit
Clonality	Polyclonal
Purification	Affinity chromatography purified via peptide column
Applications	E WB IHC
Species Reactivity	Hu Rt
Immunogen Type	Peptide
Immunogen Description	Raised against a 15 amino acid peptide from near the carboxy terminus of human CLPH.
Target Name	CLPH
Other Names	Casein-Like phosphoprotein, RSD6, C4orf35, NYD-SP26
Accession No.	NP_149113
Formulation	Supplied in PBS containing 0.02% sodium azide.
Storage	Can be stored at -20°C, stable for one year. As with all antibodies care should be taken to avoid repeated freeze thaw cycles. Antibodies should not be exposed to prolonged high temperatures.

Images



Western blot analysis of CLPH in human testis tissue lysate with CLPH antibody at 1 ug/mL.



Immunohistochemistry of CLPH in human testis tissue with CLPH antibody at 5 ug/mL.

Background

CLPH (Casein-Like phosphoprotein) is a recently discovered, evolutionarily conserved, testis-specific cytoplasmic protein expressed exclusively in postmeiotic germ cells in rat spermatogenesis. CLPH is a novel casein kinase 2-phosphorylated disordered and calcium-binding protein that displays strong variation in relative expression levels during spermatogenesis. It is frequently associated with the mitochondrial inner membrane during the last steps of spermatid differentiation and is involved in the extremely complex structural rearrangements occurring in haploid germ cells during spermiogenesis.

Note: This product is for in vitro research use only and is not intended for use in humans or animals.