

CENPO Antibody

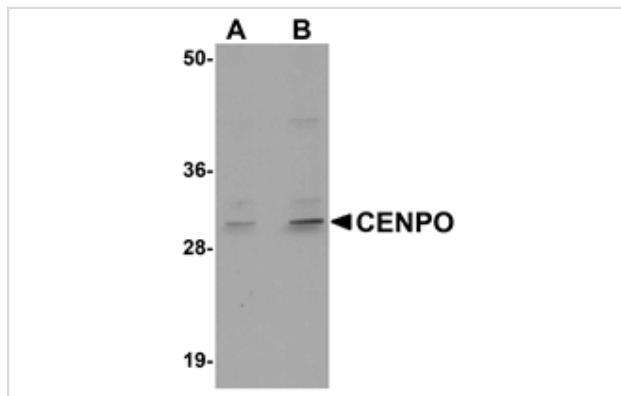
Catalog No: #24981

Orders: order@signalwayantibody.comSupport: tech@signalwayantibody.com

Description

Product Name	CENPO Antibody
Host Species	Rabbit
Clonality	Polyclonal
Purification	Affinity chromatography purified via peptide column
Applications	E WB
Species Reactivity	Hu Ms Rt
Immunogen Type	Peptide
Immunogen Description	Raised against a 16 amino acid peptide from near the center of human CENPO.
Target Name	CENPO
Other Names	Centromere protein O, CENP-O, interphase centromere complex protein 36
Accession No.	NP_077298
Formulation	Supplied in PBS containing 0.02% sodium azide.
Storage	Can be stored at -20°C, stable for one year. As with all antibodies care should be taken to avoid repeated freeze thaw cycles. Antibodies should not be exposed to prolonged high temperatures.

Images



Western blot analysis of CENPO in mouse kidney tissue lysate with CENPO antibody at (A) 1 and (B) 2 ug/mL.

Background

Accurate chromosome segregation during mitosis requires a kinetochore to assemble correctly at the centromere of each chromatid and form a dynamic interface with the microtubules of the mitotic spindle. The kinetochore assembly includes the multisubunit CENP-H/I complex which can be divided into three functional classes based on phenotype analysis. One of these classes is referred to as the CENP-O class of proteins of which CENPO is the exemplar. These proteins form a stable complex with each other and are required for proper kinetochore function and for recovery from mitotic spindle damage. CENPO has also been shown to be an auto-antigen in a small population of anti-centromere antibodies- (ACA-) positive patients with scleroderma.

Note: This product is for in vitro research use only and is not intended for use in humans or animals.