

SCF Antibody

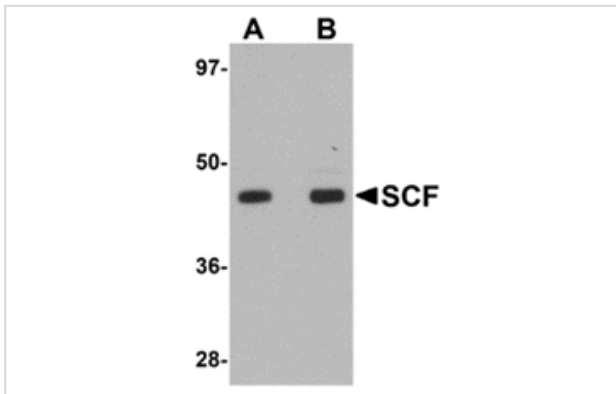
Catalog No: #24894

Orders: order@signalwayantibody.comSupport: tech@signalwayantibody.com

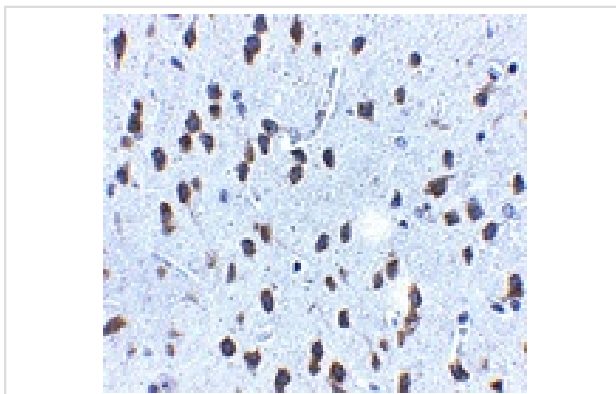
Description

Product Name	SCF Antibody
Host Species	Rabbit
Clonality	Polyclonal
Purification	Affinity chromatography purified via peptide column
Applications	E WB IHC
Species Reactivity	Hu Ms Rt
Immunogen Type	Peptide
Immunogen Description	Raised against an 18 amino acid peptide from near the center of human SCF.
Target Name	SCF
Other Names	Stem cell factor, Mast cell growth factor, MGF, c-kit ligand, KL-1, KITLG, SHEP7
Accession No.	P21583
Formulation	Supplied in PBS containing 0.02% sodium azide.
Storage	Can be stored at -20°C, stable for one year. As with all antibodies care should be taken to avoid repeated freeze thaw cycles. Antibodies should not be exposed to prolonged high temperatures.

Images



Western blot analysis of SCF in rat brain tissue lysate with SCF antibody at (A) 1 and (B) 2 ug/mL.



Immunohistochemistry of SCF in mouse brain tissue with SCF antibody at 2.5 ug/mL.

Background

Stem cell factor (SCF) is the ligand of the c-Kit oncogene and is expressed by various structural and inflammatory cells in the airways. Binding of SCF by the c-Kit receptor leads to homodimerization of the receptor and the activation of signalling pathways such as PI-3, PLC-gamma, Jak/STAT, and MAP kinase pathways. SCF expression leads to the induction of mast cell survival and the expression and release of histamine, pro-inflammatory cytokines and chemokines. The inhibition of the SCF/c-Kit pathway leads to a decrease in histamine levels, mast cell and eosinophil infiltration, IL-4 production and airway hyperresponsiveness, suggesting this pathway may be a useful therapeutic target in inflammatory diseases such as asthma. At least two isoforms of SCF are known to exist.

Note: This product is for in vitro research use only and is not intended for use in humans or animals.