

AP2M1 Antibody

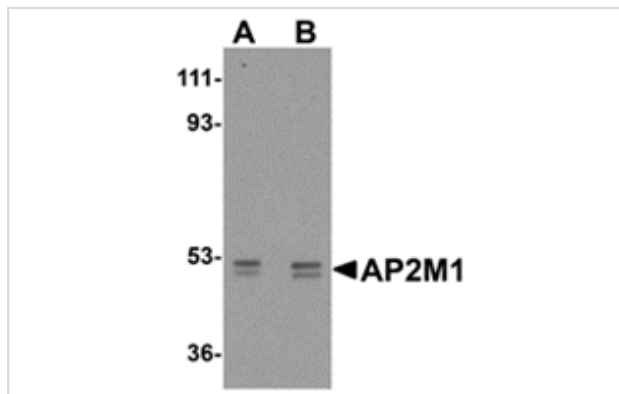
Catalog No: #24892

Orders: order@signalwayantibody.comSupport: tech@signalwayantibody.com

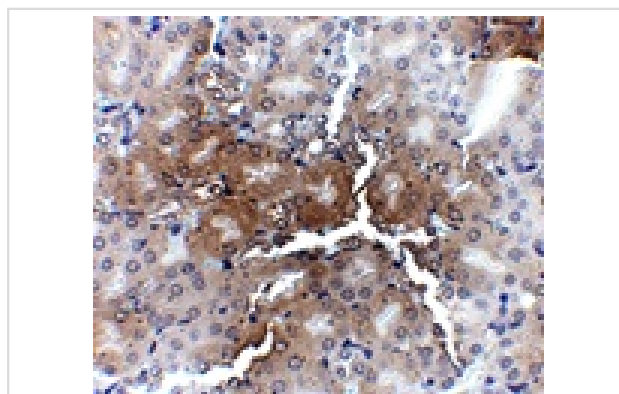
Description

Product Name	AP2M1 Antibody
Host Species	Rabbit
Clonality	Polyclonal
Purification	Affinity chromatography purified via peptide column
Applications	E WB IHC
Species Reactivity	Hu Ms Rt
Immunogen Type	Peptide
Immunogen Description	Raised against a 16 amino acid peptide near the carboxy terminus of human AP2M1.
Target Name	AP2M1
Other Names	Adaptor-related protein complex 2 mu 1, AP-2 mu-1, mu2, AP50, CLAPM1
Accession No.	NP_004059
Formulation	Supplied in PBS containing 0.02% sodium azide.
Storage	Can be stored at -20°C, stable for one year. As with all antibodies care should be taken to avoid repeated freeze thaw cycles. Antibodies should not be exposed to prolonged high temperatures.

Images



Western blot analysis of AP2M1 in human kidney tissue lysate with AP2M1 antibody at (A) 1 and (B) 2 ug/mL.



Immunohistochemistry of AP2M1 in mouse kidney tissue with AP2M1 antibody at 2.5 ug/mL.

Background

The heterotetrameric coat assembly protein complex, also known as the adaptor-related protein complex 2 (AP-2), belongs to the adaptor complexes medium subunits family. The mu 1 subunit of the AP-2 complex (AP2M1) is required for the activity of a vacuolar ATPase, which is responsible for proton pumping occurring in the acidification of endosomes and lysosomes. AP2M1 has also been shown to associate with the HIV-1 protein Nef, suggesting that Nef may use AP-2 complex to enhance the rate of endocytosis of both CD4 and class I MHC. AP2M1 may also play an important role in regulating the intracellular trafficking and function of cytotoxic T-lymphocyte associated (CTLA)-4 protein. At least two isoforms of AP2M1 are known to exist.

Note: This product is for in vitro research use only and is not intended for use in humans or animals.