

## beta-Galactosidase Antibody

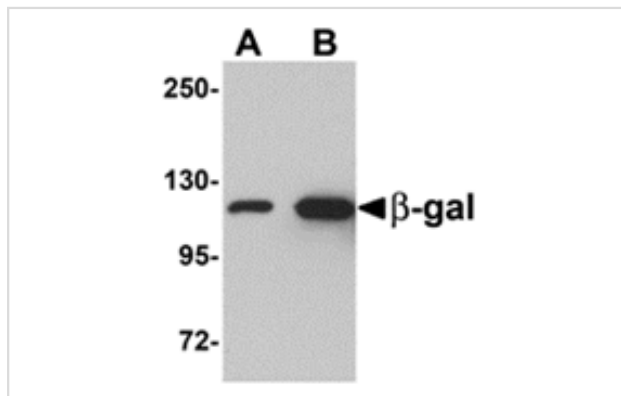
Catalog No: #24889

Orders: [order@signalwayantibody.com](mailto:order@signalwayantibody.com)Support: [tech@signalwayantibody.com](mailto:tech@signalwayantibody.com)

## Description

Product Name	beta-Galactosidase Antibody
Host Species	Rabbit
Clonality	Polyclonal
Purification	Affinity chromatography purified via peptide column
Applications	E WB
Species Reactivity	E.coli
Immunogen Type	Peptide
Immunogen Description	Raised against a 17 amino acid peptide from near the amino terminus of E. coli beta-gal.
Target Name	beta-Galactosidase
Other Names	beta-Galactosidase, beta-galactosidase, beta-gal
Accession No.	NP_752394
Formulation	Supplied in PBS containing 0.02% sodium azide.
Storage	Can be stored at -20°C, stable for one year. As with all antibodies care should be taken to avoid repeated freeze thaw cycles. Antibodies should not be exposed to prolonged high temperatures.

## Images



Western blot analysis of (A) 5 and (B) 25 ng of b-gal with b-gal antibody at 1 ug/mL.

## Background

Beta-galactosidase (beta-gal), an inducible enzyme that catalyses the hydrolysis of lactose and other beta-galactosides into monosaccharides, is a product of the LacZ operon, and is a homo-tetrameric protein consisting of four identical subunits of approximately 114 kDa each. The enzyme is commonly used as a reporter gene in molecular biology to assess the efficiency of transfection.

Note: This product is for in vitro research use only and is not intended for use in humans or animals.