

## CDC42 Antibody

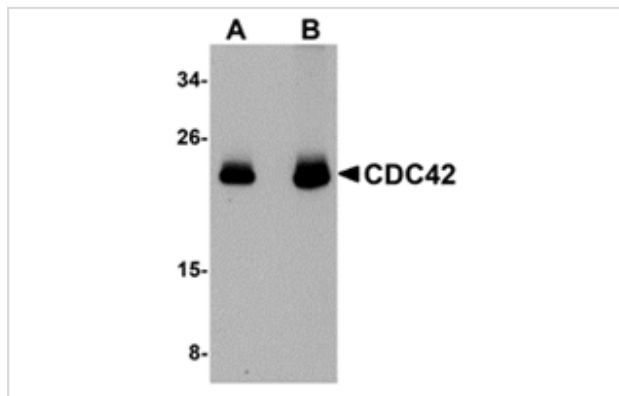
Catalog No: #24863

Orders: [order@signalwayantibody.com](mailto:order@signalwayantibody.com)Support: [tech@signalwayantibody.com](mailto:tech@signalwayantibody.com)

## Description

Product Name	CDC42 Antibody
Host Species	Rabbit
Clonality	Polyclonal
Purification	Affinity chromatography purified via peptide column
Applications	E WB
Species Reactivity	Hu Ms Rt
Immunogen Type	Peptide
Immunogen Description	Raised against a 17 amino acid peptide near the amino terminus of human CDC42.
Target Name	CDC42
Other Names	Cell division cycle 42, G25K
Accession No.	NP_001782
Formulation	Supplied in PBS containing 0.02% sodium azide.
Storage	Can be stored at -20°C, stable for one year. As with all antibodies care should be taken to avoid repeated freeze thaw cycles. Antibodies should not be exposed to prolonged high temperatures.

## Images



Western blot analysis of CDC42 in human brain tissue lysate with CDC42 antibody at (A) 0.5 and (B) 1 ug/mL.

## Background

CDC42 is a small GTPase of the Rho-subfamily, which regulates signaling pathways that control diverse cellular functions including cell morphology, migration, endocytosis and cell cycle progression. This protein is highly similar to *S. cerevisiae* CDC42, and is able to complement the yeast *cdc42-1* mutant. The product of oncogene Dbl was reported to specifically catalyze the dissociation of GDP from this protein. CDC42 is thought to regulate actin polymerization through its direct binding to Neural Wiskott-Aldrich syndrome protein (N-WASP), which subsequently activates Arp2/3 complex. At least two isoforms of CDC42 are known to exist.

Note: This product is for in vitro research use only and is not intended for use in humans or animals.