

PARL Antibody

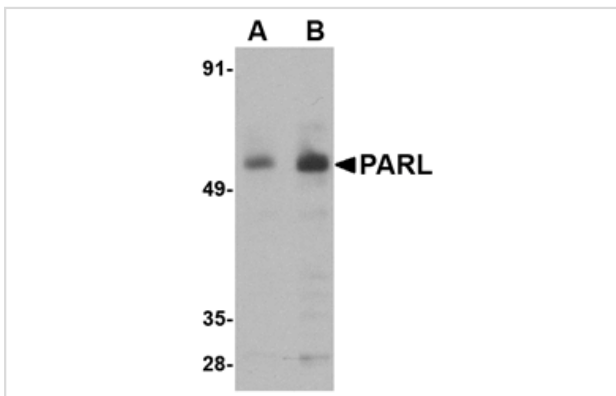
Catalog No: #24739

Orders: order@signalwayantibody.comSupport: tech@signalwayantibody.com

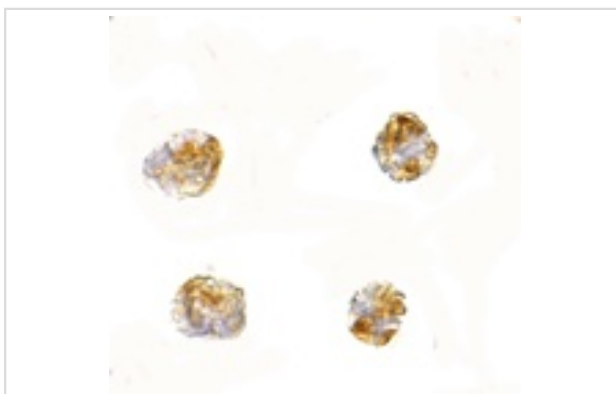
Description

| | |
|-----------------------|---|
| Product Name | PARL Antibody |
| Host Species | Rabbit |
| Clonality | Polyclonal |
| Purification | Affinity chromatography purified via peptide column |
| Applications | E WB ICC |
| Species Reactivity | Hu Ms Rt |
| Immunogen Type | Peptide |
| Immunogen Description | Raised against a 15 amino acid peptide from near the amino terminus of human PARL. |
| Target Name | PARL |
| Other Names | Presenilin-associated rhomboid-like protein, PSARL, PSARL1, PSNENIP2 |
| Accession No. | Q9H300 |
| Formulation | Supplied in PBS containing 0.02% sodium azide. |
| Storage | Can be stored at -20°C, stable for one year. As with all antibodies care should be taken to avoid repeated freeze thaw cycles. Antibodies should not be exposed to prolonged high temperatures. |

Images



Western blot analysis of PARL in 3T3 cell lysate with PARL antibody at (A) 1 and (B) 2 ug/mL.



Immunocytochemistry of PARL in 3T3 cells with PARL antibody at 2.5 ug/mL.

Background

PARL is a mitochondrial integral membrane protein and a member of the highly conserved rhomboid superfamily of membrane proteins. PARL is required for the control of apoptosis during postnatal growth and is required for the processing of OPA1, a protein that prevents the release of cytochrome C from the mitochondria in response to apoptotic signals. In lymphocytes and neurons, PARL β 's association with other proteins, such as the Bcl-2 family-related protein Hax1 and Omi can lead to the proteolytic processing of Omi by PARL, preventing the accumulation of Bax, thereby suppressing apoptosis. Variations in this gene have been associated with increased risk for type 2 diabetes. PARL may also play a role in the progression of Alzheimer β 's disease through its associations with presenilin-1 and -2. Multiple isoforms of PARL are known to exist.

Note: This product is for in vitro research use only and is not intended for use in humans or animals.