

## Stella Antibody

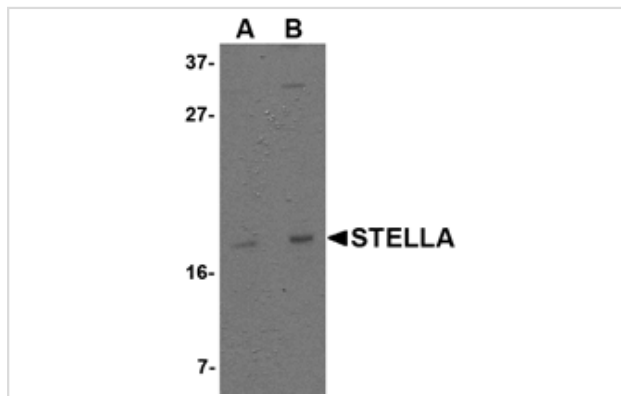
Catalog No: #24737

Orders: [order@signalwayantibody.com](mailto:order@signalwayantibody.com)Support: [tech@signalwayantibody.com](mailto:tech@signalwayantibody.com)

## Description

Product Name	Stella Antibody
Host Species	Rabbit
Clonality	Polyclonal
Purification	Affinity chromatography purified via peptide column
Applications	E WB
Species Reactivity	Hu Ms Rt
Immunogen Type	Peptide
Immunogen Description	Raised against a 13 amino acid peptide from near the carboxy terminus of human Stella.
Target Name	Stella
Other Names	Development pluripotency-associated 3, DPPA3, primordial germ cell 7, PGC7
Accession No.	NP_954980
Formulation	Supplied in PBS containing 0.02% sodium azide.
Storage	Can be stored at -20°C, stable for one year. As with all antibodies care should be taken to avoid repeated freeze thaw cycles. Antibodies should not be exposed to prolonged high temperatures.

## Images



Western blot analysis of Stella in 293 cell lysate with Stella antibody at (A) 1 and (B) 2 ug/mL.

## Background

Stella was initially identified in primordial germ cells and pre-implantation embryos whose expression as a maternal factor is important in early embryonic development but is not required for germ cell specification in mice. In humans, Stella is thought to be a marker for pluripotency in embryonic stem (ES) cells as its expression is observed in primordial germ cells of both sexes and germ cell tumors but not in normal somatic tissues. However, in ES cell colonies, heterogeneous expression of Stella was seen in high throughput in situ hybridization assays, indicating that higher levels of complexity exist in otherwise thought to be undifferentiated ES cells. At least two distinct isoforms of Stella are known to exist.

Note: This product is for in vitro research use only and is not intended for use in humans or animals.