

## NENF Antibody

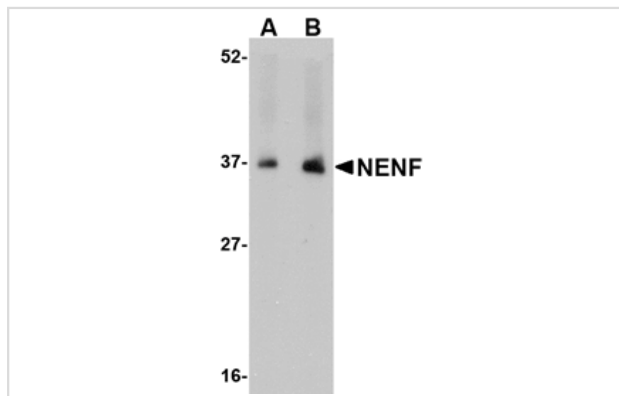
Catalog No: #24736

Orders: [order@signalwayantibody.com](mailto:order@signalwayantibody.com)Support: [tech@signalwayantibody.com](mailto:tech@signalwayantibody.com)

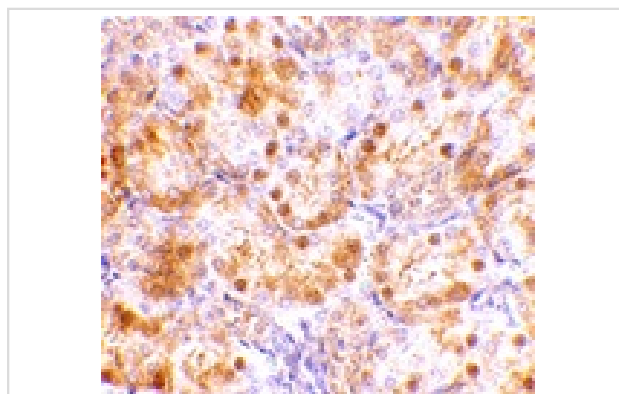
## Description

Product Name	NENF Antibody
Host Species	Rabbit
Clonality	Polyclonal
Purification	Affinity chromatography purified via peptide column
Applications	E WB IHC
Species Reactivity	Hu Ms Rt
Immunogen Type	Peptide
Immunogen Description	Raised against a 15 amino acid peptide from near the carboxy terminus of human NENF.
Target Name	NENF
Other Names	NENF, Neuron derived neurotrophic factor, neudesin, CIR2, SPUF, SCIRP10
Accession No.	NP_037481
Formulation	Supplied in PBS containing 0.02% sodium azide.
Storage	Can be stored at -20°C, stable for one year. As with all antibodies care should be taken to avoid repeated freeze thaw cycles. Antibodies should not be exposed to prolonged high temperatures.

## Images



Western blot analysis of NENF in human kidney tissue lysate with NENF antibody at (A) 1 and (B) 2 ug/mL.



Immunohistochemistry of NENF in rat kidney tissue with NENF antibody at 10 ug/mL.

## Background

NENF is a secreted protein that is expressed in neurons but not glial cells of the brain. This protein has neurotrophic activity in primary cultured mouse neurons but not mitogenic activity in primary cultured mouse astrocytes. NENF activated mitogen-activated protein (MAP) and phosphatidylinositol-3 kinase pathways and could be inhibited by pertussis toxin but not receptor tyrosine kinases, suggesting that NENF acts through a Gi/Go-protein-coupled receptor.

---

Note: This product is for in vitro research use only and is not intended for use in humans or animals.