

## gp120 Antibody

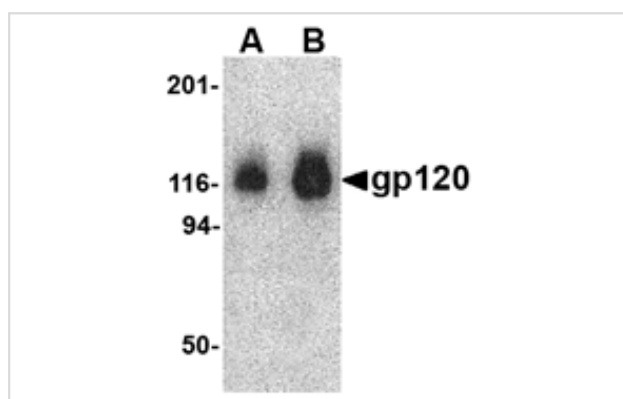
Catalog No: #24700

Orders: [order@signalwayantibody.com](mailto:order@signalwayantibody.com)Support: [tech@signalwayantibody.com](mailto:tech@signalwayantibody.com)

## Description

Product Name	gp120 Antibody
Host Species	Rabbit
Clonality	Polyclonal
Purification	Affinity chromatography purified via peptide column
Applications	E WB
Species Reactivity	Virus
Immunogen Type	Peptide
Immunogen Description	Raised against 16 amino acid peptide representing the major HIV-1 consensus sequence near the N-terminal region of V1/V2 loop.
Target Name	gp120
Other Names	HIV-1 glycoprotein 120
Accession No.	AAT67551
Formulation	Supplied in PBS containing 0.02% sodium azide.
Storage	Can be stored at -20°C, stable for one year. As with all antibodies care should be taken to avoid repeated freeze thaw cycles. Antibodies should not be exposed to prolonged high temperatures.

## Images



Western blot analysis of 1 ug of gp120 with gp120 antibody at (A) 0.5 and (B) 1 ug/mL.

## Background

Human immunodeficiency virus type 1 (HIV-1) entry into target cells is directed by the envelope (Env) glycoproteins, which are present on the surface of HIV-1 virion or infected cells in the form of trimers consisting of gp120/gp41 complexes. The surface subunit, gp120, initiates the entry process by interacting sequentially with the CD4 receptor and a co-receptor CCR5 or CXCR4, thereby inducing a conformational change that allows the transmembrane (TM) gp41 subunit to mediate fusion between viral and target cell membranes. Cleavage of Env into its gp120 and gp41 components is necessary for activation of its fusogenic activity.

Note: This product is for in vitro research use only and is not intended for use in humans or animals.