

NIPSNAP Antibody

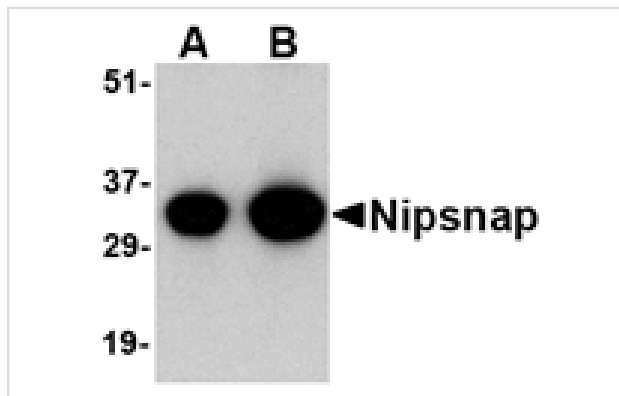
Catalog No: #24656

Orders: order@signalwayantibody.comSupport: tech@signalwayantibody.com

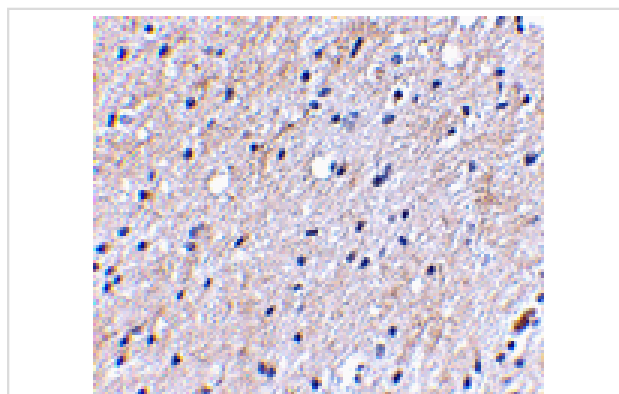
Description

Product Name	NIPSNAP Antibody
Host Species	Rabbit
Clonality	Polyclonal
Purification	Affinity chromatography purified via peptide column
Applications	E WB IHC
Species Reactivity	Hu Ms Rt
Immunogen Type	Peptide
Immunogen Description	Raised against a 18 amino acid peptide from near the carboxy terminus of human NIPSNAP.
Target Name	NIPSNAP
Other Names	Non-neuronal SNAP25-like protein, NIPSNAP1
Accession No.	NP_003625
Formulation	Supplied in PBS containing 0.02% sodium azide.
Storage	Can be stored at -20°C, stable for one year. As with all antibodies care should be taken to avoid repeated freeze thaw cycles. Antibodies should not be exposed to prolonged high temperatures.

Images



Western blot analysis of NIPSNAP in human brain tissue lysate with NIPSNAP antibody at (A) 0.5 and (B) 1 ug/mL.



Immunohistochemical staining of human brain tissue using Nipsnap antibody at 2.5 ug/mL.

Background

NIPSNAP is a member of an evolutionarily well conserved gene family and has a strong sequence similarity to the central portion of a protein encoded by *C. elegans* chromosome III between a 4-nitrophenylphosphatase (NIP) domain and non-neuronal SNAP25-like protein. Recent studies have indicated that NIPSNAP is involved in the regulation of the Ca²⁺-selective transient receptor potential vanilloid channel 6 (TRPV6). NIPSNAP1 associates with TRPV6 at the plasma membrane and inhibits TRPV6 currents. Other studies show that NIPSNAP β expression is reduced in the phenylketonuria (PKU) mouse brain, suggesting that NIPSNAP may play a role in memory.

Note: This product is for in vitro research use only and is not intended for use in humans or animals.