

SCRAPPER Antibody

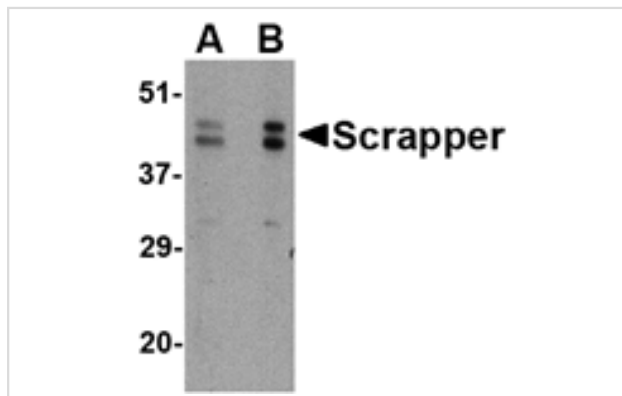
Catalog No: #24625

Orders: order@signalwayantibody.comSupport: tech@signalwayantibody.com

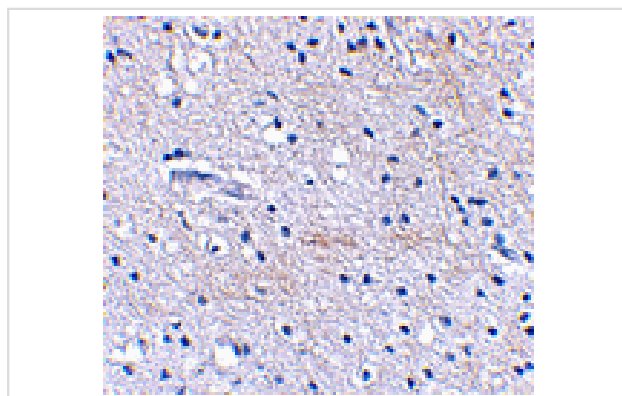
Description

Product Name	SCRAPPER Antibody
Host Species	Rabbit
Clonality	Polyclonal
Purification	Affinity chromatography purified via peptide column
Applications	E WB IHC
Species Reactivity	Hu Ms Rt
Immunogen Type	Peptide
Immunogen Description	Raised against a 18 amino acid peptide near the carboxy terminus of the human SCRAPPER.
Target Name	SCRAPPER
Other Names	F-box, Leucine rich repeat protein 20, FBXL20, FBI2, FBL20
Accession No.	NP_116264
Formulation	Supplied in PBS containing 0.02% sodium azide.
Storage	Can be stored at -20°C, stable for one year. As with all antibodies care should be taken to avoid repeated freeze thaw cycles. Antibodies should not be exposed to prolonged high temperatures.

Images



Western blot analysis of SCRAPPER in A20 cell lysate with SCRAPPER antibody at (A) 0.5 and (B) 1 ug/mL.



Immunohistochemical staining of human brain tissue using Scrapper antibody at 2.5 ug/mL.

Background

Members of the F-box protein family, such as Scrapper, are characterized by an approximately 40-amino acid F-box motif. SCF complexes, formed by SKP1, cullin, and F-box proteins, act as protein-ubiquitin ligases. Scrapper is selectively expressed in the brain, broadly expressed within the mouse CNS and is abundant at presynaptic membrane. Scrapper has orthologs in *C. elegans*, *D. melanogaster*, and mammals which suggests that it might function as an important membrane-localized E3 ligase in various species. Scrapper is a major presynaptic E3 ubiquitin ligase that acts through RIM1a via degradation and the ubiquitin-proteasome-system (UPS) pathway to critically regulate synaptic transmission. This identifies protein degradation as a mechanism for holding synaptic communication in check.

Note: This product is for in vitro research use only and is not intended for use in humans or animals.