

ADAP Antibody

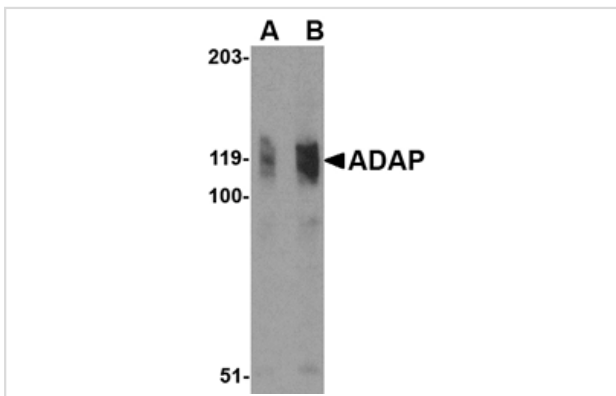
Catalog No: #24554

Orders: order@signalwayantibody.comSupport: tech@signalwayantibody.com

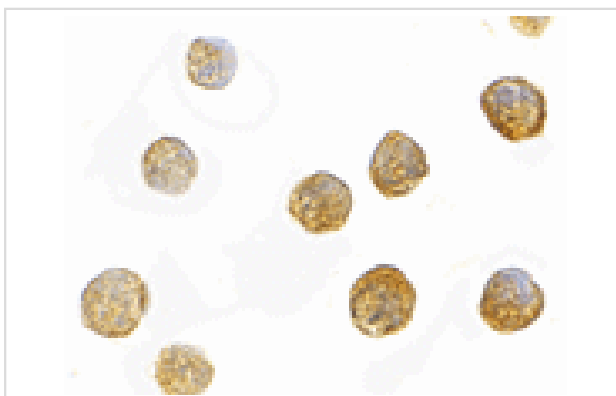
Description

Product Name	ADAP Antibody
Host Species	Rabbit
Clonality	Polyclonal
Purification	Affinity chromatography purified via peptide column
Applications	E WB ICC
Species Reactivity	Hu
Immunogen Type	Peptide
Immunogen Description	Raised against a 17 amino acid peptide from near the amino terminus of human ADAP.
Target Name	ADAP
Other Names	Adhesion and degranulation adapter protein, FYN binding protein, FYB-120, 130, SLAP-130
Accession No.	NP_001456
Formulation	Supplied in PBS containing 0.02% sodium azide.
Storage	Can be stored at -20°C, stable for one year. As with all antibodies care should be taken to avoid repeated freeze thaw cycles. Antibodies should not be exposed to prolonged high temperatures.

Images



Western blot analysis of ADAP in K562 cell lysate with ADAP antibody at (A) 0.5 and (B) 1 ug/mL.



Immunocytochemistry of ADAP in K562 cells with ADAP antibody at 10 ug/mL.

Background

The adhesion and degranulation adaptor protein (ADAP) was initially identified as a molecular adapter that couples T cell receptor (TCR) stimulation to the avidity of integrins governing T cell adhesion. TCR stimulation promotes the formation of a multi-protein complex containing CARMA1, MALT1, and BCL-10, which through the association of ADAP, ultimately activates the NF- κ B family of transcription factors. More recent experiments have shown that ADAP controls optimal T cell proliferation, cytokine production, and expression of the Bcl-2 family member Bcl-x(L), suggesting that ADAP regulates T cell activation by promoting antigen-dependent T cell-antigen presenting cell (APC) activation. At least three isoforms of ADAP are known to exist.

Note: This product is for in vitro research use only and is not intended for use in humans or animals.