

## ADAP Antibody

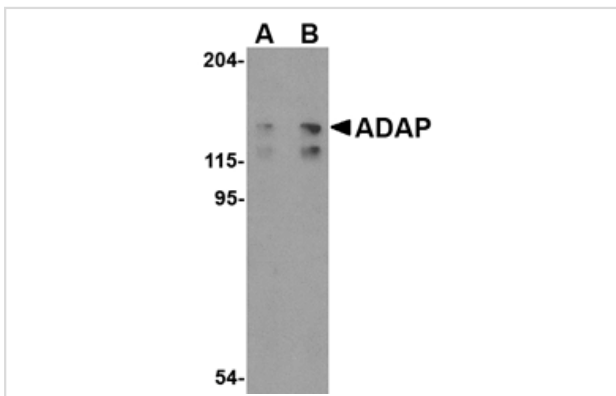
Catalog No: #24553

Orders: [order@signalwayantibody.com](mailto:order@signalwayantibody.com)Support: [tech@signalwayantibody.com](mailto:tech@signalwayantibody.com)

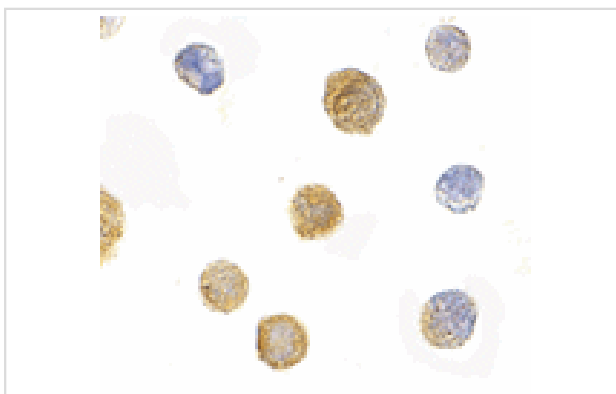
## Description

Product Name	ADAP Antibody
Host Species	Rabbit
Clonality	Polyclonal
Purification	Affinity chromatography purified via peptide column
Applications	E WB ICC
Species Reactivity	Hu Ms
Immunogen Type	Peptide
Immunogen Description	Raised against a 20 amino acid peptide from near the carboxy terminus of human ADAP.
Target Name	ADAP
Other Names	Adhesion and degranulation adapter protein, FYN binding protein, FYB-120, 130, SLAP-130
Accession No.	NP_001456
Formulation	Supplied in PBS containing 0.02% sodium azide.
Storage	Can be stored at -20°C, stable for one year. As with all antibodies care should be taken to avoid repeated freeze thaw cycles. Antibodies should not be exposed to prolonged high temperatures.

## Images



Western blot analysis of ADAP in K562 cell lysate with ADAP antibody at (A) 0.5 and (B) 1 ug/mL.



Immunocytochemistry of ADAP in K562 cells with ADAP antibody at 10 ug/mL.

## Background

The adhesion and degranulation adaptor protein (ADAP) was initially identified as a molecular adapter that couples T cell receptor (TCR) stimulation to the avidity of integrins governing T cell adhesion. TCR stimulation promotes the formation of a multi-protein complex containing CARMA1, MALT1, and BCL-10, which through the association of ADAP, ultimately activates the NF- $\kappa$ B family of transcription factors. More recent experiments have shown that ADAP controls optimal T cell proliferation, cytokine production, and expression of the Bcl-2 family member Bcl-x(L), suggesting that ADAP regulates T cell activation by promoting antigen-dependent T cell-antigen presenting cell (APC) activation. At least three isoforms of ADAP are known to exist.

---

Note: This product is for in vitro research use only and is not intended for use in humans or animals.