

SLPI Antibody

Catalog No: #24543

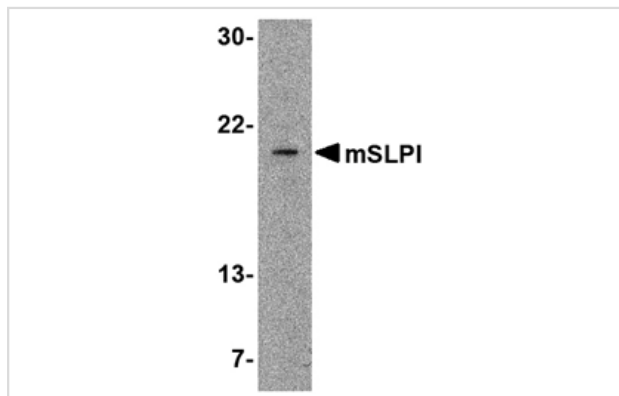
Orders: order@signalwayantibody.com

Support: tech@signalwayantibody.com

Description

Product Name	SLPI Antibody
Host Species	Rabbit
Clonality	Polyclonal
Purification	Affinity chromatography purified via peptide column
Applications	E WB
Species Reactivity	Ms
Immunogen Type	Peptide
Immunogen Description	Raised against a 17 amino acid peptide from near the center of mouse SLPI.
Target Name	SLPI
Other Names	mSLPI, Secretory leukocyte protease inhibitor, HUSI
Accession No.	NP_035544
Formulation	Supplied in PBS containing 0.02% sodium azide.
Storage	Can be stored at -20°C, stable for one year. As with all antibodies care should be taken to avoid repeated freeze thaw cycles. Antibodies should not be exposed to prolonged high temperatures.

Images



Western blot analysis of SLPI in A-20 cell lysate with SLPI antibody at 2 ug/mL.

Background

Secretory leukocyte protease inhibitor (SLPI) is produced at mucosal surfaces, primarily the upper respiratory tract and is thought to play an important role in the antiprotease defense mechanism of the lung. SLPI forms inhibitory complexes with numerous proteolytic enzymes such as neutrophil elastase, and has been shown to possess anti-inflammatory, anti-viral, and antibacterial activities. Its expression in oral epithelial cells is stimulated by HIV-1 gp120, suggesting that SLPI is a component of the oral mucosal response to HIV-1. In peripheral blood monocytes, SLPI can inhibit NF-κB activation by inhibiting IκB degradation in the cytoplasm and competing for NF-κB binding sites in the nucleus. This attenuation of the inflammatory response may also act to suppress liver metastases and other cancer cell invasions, but promote blood-borne metastasis via an invasion-independent pathway.

Note: This product is for in vitro research use only and is not intended for use in humans or animals.