

## Neurotrypsin Antibody

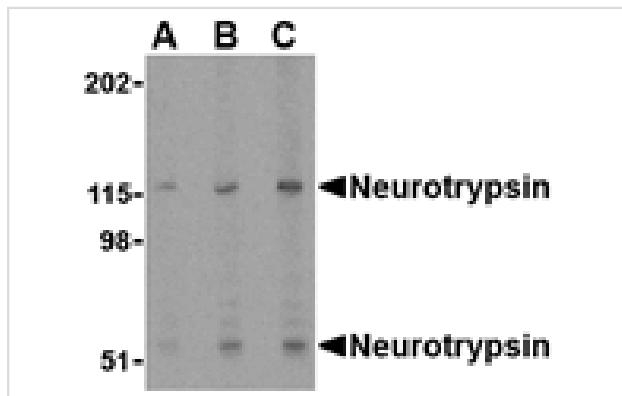
Catalog No: #24518

Orders: [order@signalwayantibody.com](mailto:order@signalwayantibody.com)Support: [tech@signalwayantibody.com](mailto:tech@signalwayantibody.com)

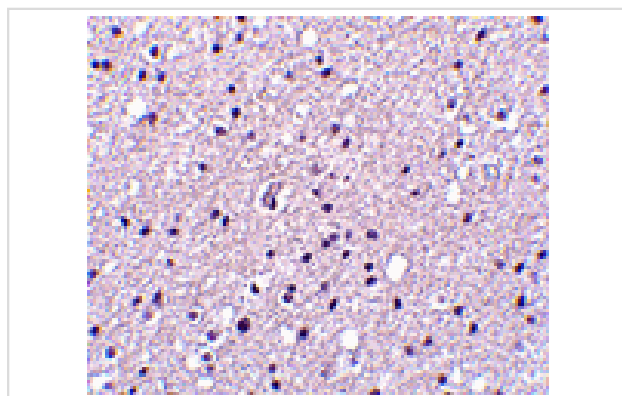
## Description

Product Name	Neurotrypsin Antibody
Host Species	Rabbit
Clonality	Polyclonal
Purification	Affinity chromatography purified via peptide column
Applications	E WB IHC
Species Reactivity	Hu Ms Rt
Immunogen Type	Peptide
Immunogen Description	Raised against a 23 amino acid peptide from near the amino terminus of human neurotrypsin.
Target Name	Neurotrypsin
Other Names	Motopsin, Protease serine 12, PRSS12, MRT1, BSSP3
Accession No.	CAA04816
Formulation	Supplied in PBS containing 0.02% sodium azide.
Storage	Can be stored at -20°C, stable for one year. As with all antibodies care should be taken to avoid repeated freeze thaw cycles. Antibodies should not be exposed to prolonged high temperatures.

## Images



Western blot analysis of neurotrypsin in SK-N-SH cell lysate with neurotrypsin antibody at (A) 0.5, (B) 1 and (C) 2 ug/mL.



Immunohistochemistry of Neurotrypsin in human brain tissue with Neurotrypsin antibody at 2.5 ug/mL.

## Background

Neurotrypsin is a central nervous system-expressed serine protease whose truncation or absence causes nonsyndromic mental retardation. It is most prominently expressed in structures that are involved in the processing and storage of learned behavior and memory, such as the cerebral cortex, the hippocampus, and amygdala. Evidence suggests that neurotrypsin has multiple functions, including axonal outgrowth, maintaining neuronal plasticity, and arranging the perineuronal environment, partly in coordination with other proteases including tissue plasminogen activator. At least two isoforms of neurotrypsin are known to exist.

---

Note: This product is for in vitro research use only and is not intended for use in humans or animals.