

Emerin Antibody

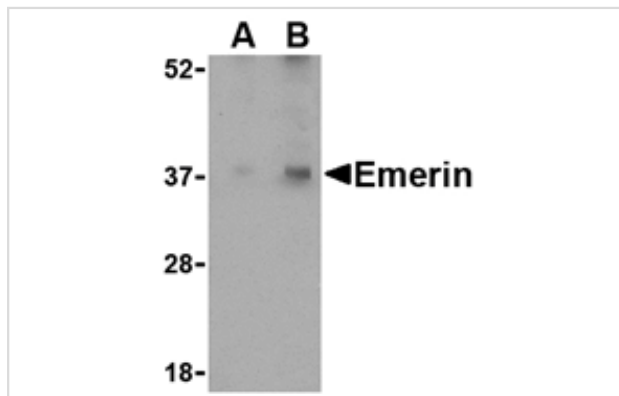
Catalog No: #24491

Orders: order@signalwayantibody.comSupport: tech@signalwayantibody.com

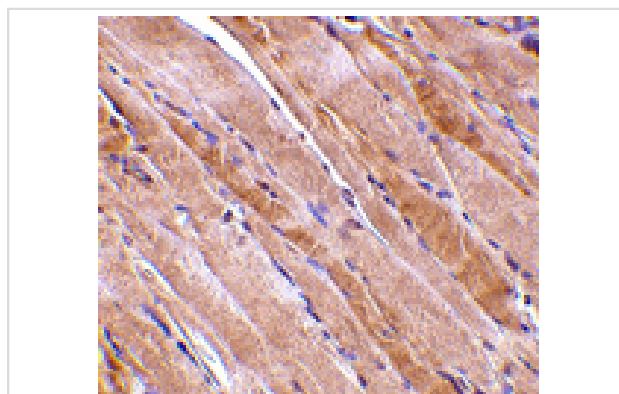
Description

Product Name	Emerin Antibody
Host Species	Rabbit
Clonality	Polyclonal
Purification	Affinity chromatography purified via peptide column
Applications	E WB IHC
Species Reactivity	Hu Ms Rt
Immunogen Type	Peptide
Immunogen Description	Raised against a 19 amino acid peptide from near the amino terminus of human Emerin.
Target Name	Emerin
Other Names	Emerin, Emery-Dreifuss muscular dystrophy, EDMD, EMD
Accession No.	NP_000108
Formulation	Supplied in PBS containing 0.02% sodium azide.
Storage	Can be stored at -20°C, stable for one year. As with all antibodies care should be taken to avoid repeated freeze thaw cycles. Antibodies should not be exposed to prolonged high temperatures.

Images



Western blot analysis of Emerin in human skeletal muscle tissue lysate with Emerin antibody at (A) 0.5 and (B) 1 ug/mL.



Immunohistochemistry of emerin in human skeletal muscle tissue with emerin antibody at 2.5 ug/mL.

Background

Emerin is a serine-rich nuclear membrane protein and a member of the nuclear lamina-associated protein family that includes proteins such as LAP2 and MAN1. Each family member, including Emerin, has an ~40 amino acid LEM-domains that binds barrier-to-autointegration (BANF1), a conserved chromatin protein that also serves as a host cell component of retroviral integration complexes, including that of HIV. Emerin is anchored at the inner membrane of the nuclear envelope where it binds to nuclear intermediate filaments that are formed by lamin proteins. Dreifuss-Emery muscular dystrophy is an X-linked inherited degenerative myopathy resulting from mutation in the emerin gene.

Note: This product is for in vitro research use only and is not intended for use in humans or animals.