

Cbl Antibody

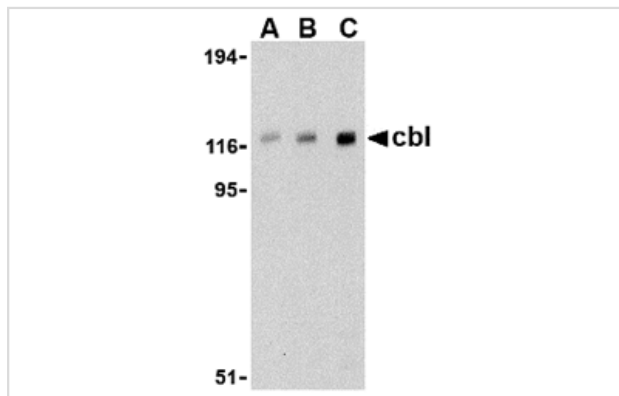
Catalog No: #24466

Orders: order@signalwayantibody.comSupport: tech@signalwayantibody.com

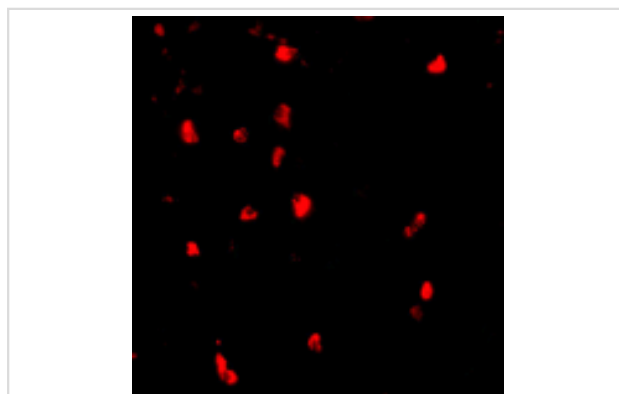
Description

Product Name	Cbl Antibody
Host Species	Rabbit
Clonality	Polyclonal
Purification	Affinity chromatography purified via peptide column
Applications	E WB IF
Species Reactivity	Hu Ms Rt
Immunogen Type	Peptide
Immunogen Description	Raised against a 14 amino acid peptide from near the carboxy terminus of human cbl.
Target Name	Cbl
Other Names	Casitas B-lineage lymphoma proto-oncogene, Cas-BR-M murine ecotropic retro-viral transforming sequence
Accession No.	P22681
Formulation	Supplied in PBS containing 0.02% sodium azide.
Storage	Can be stored at -20°C, stable for one year. As with all antibodies care should be taken to avoid repeated freeze thaw cycles. Antibodies should not be exposed to prolonged high temperatures.

Images



Western blot analysis of cbl in Daudi cell lysate with cbl antibody at (A) 0.5, (B) 1, and (C) 2 ug/mL.



Immunofluorescence of cbl in human lymph node tissue with cbl antibody at 20 ug/mL.

Background

The mammalian cbl family of ubiquitin ligases consists of three homologs known as cbl (also known as c-Cbl), Cbl-B, and Cbl-3 which share highly conserved a tyrosine-kinase-binding domain, linker and RING finger domain in their amino-terminal halves. Similar to other E3 ubiquitin ligases, Cbl catalyzes the transfer of ubiquitin from an E2 or Ubc (ubiquitin-conjugating) enzyme to the ε-amino group of a lysine residue of the substrate protein. Cbl acts to negatively regulate many types of cell-surface receptors, including the Syk protein tyrosine kinase family. Cbl is thought to be involved in T- and B-cell signaling, in addition to thymus development. Of the three known homologs in the cbl family, cbl antibody reacts specifically with cbl. Multiple isoforms of cbl have been reported.

Note: This product is for in vitro research use only and is not intended for use in humans or animals.