

Rheb Antibody

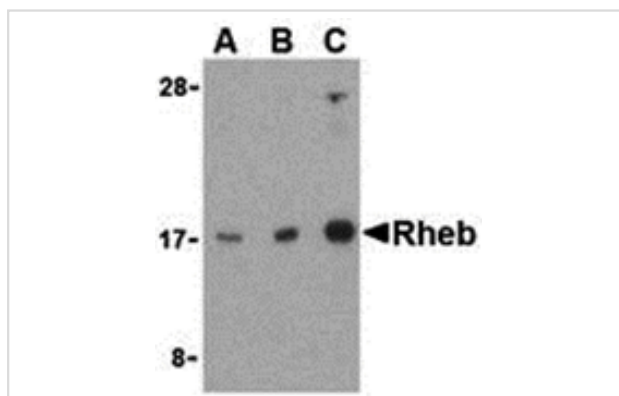
Catalog No: #24307

Orders: order@signalwayantibody.comSupport: tech@signalwayantibody.com

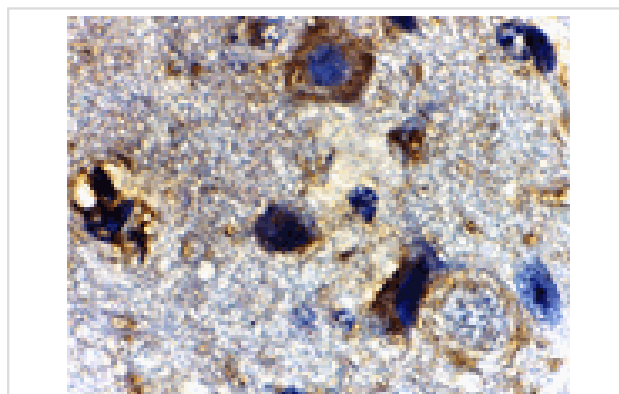
Description

Product Name	Rheb Antibody
Host Species	Rabbit
Clonality	Polyclonal
Purification	Affinity chromatography purified via peptide column
Applications	E WB IHC
Species Reactivity	Hu Ms Rt
Immunogen Type	Peptide
Immunogen Description	Raised against a 15 amino acid peptide from the middle region of human Rheb.
Target Name	Rheb
Accession No.	AAH16155
Formulation	Supplied in PBS containing 0.02% sodium azide.
Storage	Can be stored at -20°C, stable for one year. As with all antibodies care should be taken to avoid repeated freeze thaw cycles. Antibodies should not be exposed to prolonged high temperatures.

Images



Western blot analysis of Rheb in mouse brain cell lysate with Rheb antibody at (A) 1, (B) 2, and (C) 4 ug/mL.



Immunohistochemistry of Rheb in mouse brain tissue with Rheb antibody at 2 ug/mL.

Background

Rheb (Ras homolog enriched in brain) is an evolutionarily conserved member of the Ras family of small GTP-binding proteins originally found to be rapidly induced by synaptic activity in the hippocampus following seizure. While it is expressed at relatively high levels in the brain, Rheb is widely

expressed in other tissues and may be induced by growth factor stimulation. Similar to other family members, Rheb triggers activation of the Raf-MEK-MAPK pathway. Biochemical and genetic studies demonstrate that Rheb has an important role in regulating the insulin/Target of rapamycin (TOR) signaling pathway. TOR is a serine/threonine protein kinase that acts as a sensor for ATP and amino acids, balancing the availability of nutrients with protein translation and cell growth. A dimeric protein complex termed TSC1/TSC2 indirectly inhibits TOR activity by inhibiting Rheb via the GAP activity of TSC2.

Note: This product is for in vitro research use only and is not intended for use in humans or animals.