

TIRP Antibody

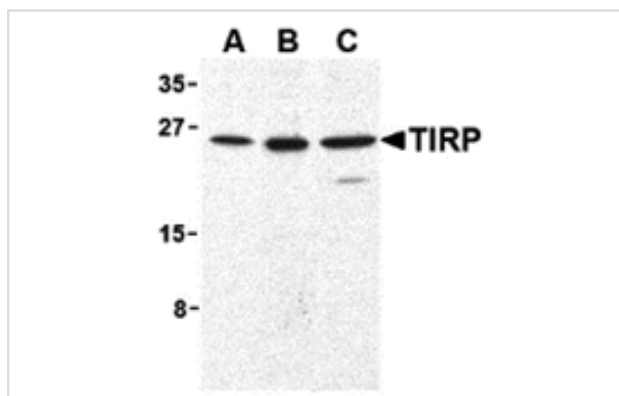
Catalog No: #24237

Orders: order@signalwayantibody.comSupport: tech@signalwayantibody.com

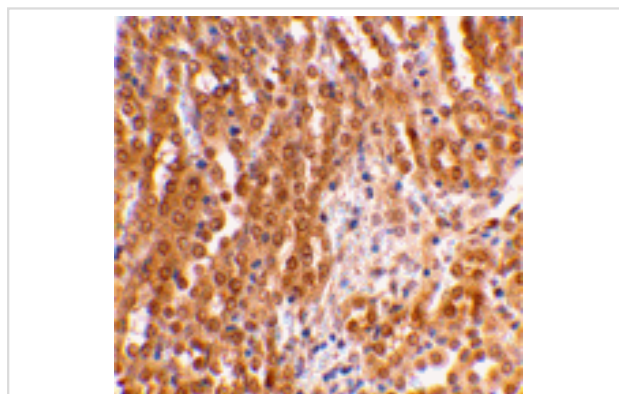
Description

| | |
|-----------------------|---|
| Product Name | TIRP Antibody |
| Host Species | Rabbit |
| Clonality | Polyclonal |
| Purification | Ion exchange chromatography purified |
| Applications | E WB IHC |
| Species Reactivity | Hu Ms Rt |
| Immunogen Type | Peptide |
| Immunogen Description | Raised against a peptide corresponding to amino acids near the C-terminus of human TIRP. |
| Target Name | TIRP |
| Accession No. | AAP81748 |
| Formulation | Supplied in PBS containing 0.02% sodium azide. |
| Storage | Can be stored at -20°C, stable for one year. As with all antibodies care should be taken to avoid repeated freeze thaw cycles. Antibodies should not be exposed to prolonged high temperatures. |

Images



Western blot analysis of TIRP in human (A), mouse (B), and rat (C) kidney cell lysates with TIRP antibody (C2) at 1 ug/mL.



Immunohistochemical staining of mouse kidney using TIRP antibody at 2 ug/mL.

Background

TIRP is a member of the Toll/interleukin-1 receptor (TIR) family, a group of proteins that include the Toll-like receptors (TLRs). TLRs are signaling molecules that recognize different pathogen-associated molecular patterns (PAMPs) and serve as an important link between the innate and adaptive

immune responses. TIRP, along with other molecules such as TRIF, MAL, and MyD88, serves as an adaptor protein that allows for the interaction and activation of the IL-1R-associated kinase (IRAK) family, the subsequent activation of TNF receptor associated factor (TRAF)-6, and ultimately the activation of NF- κ B. Expression of TIRP appears to be essential for TLR4 signalling.

Note: This product is for in vitro research use only and is not intended for use in humans or animals.