

SARM Antibody

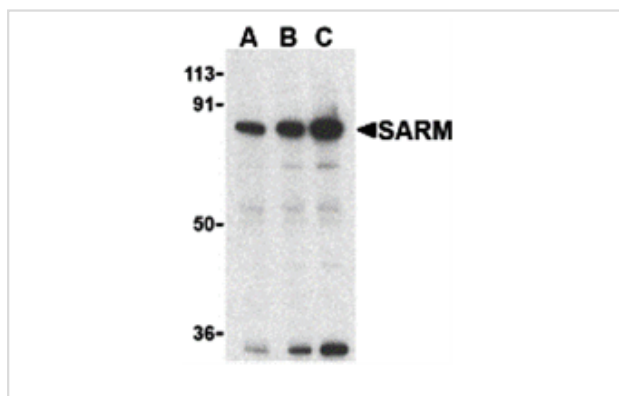
Catalog No: #24236

Orders: order@signalwayantibody.comSupport: tech@signalwayantibody.com

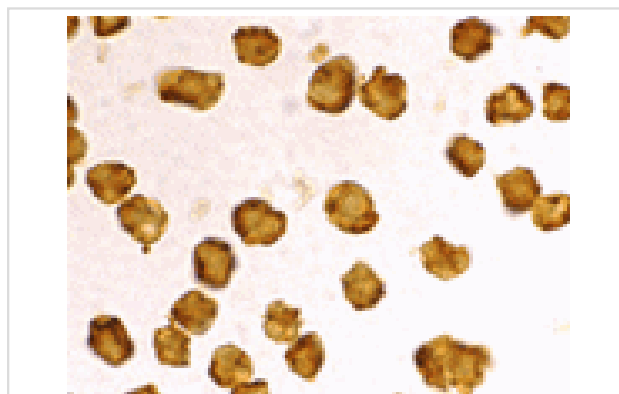
Description

Product Name	SARM Antibody
Host Species	Rabbit
Clonality	Polyclonal
Purification	Ion exchange chromatography purified
Applications	E WB ICC
Species Reactivity	Hu Ms
Immunogen Type	Peptide
Immunogen Description	Raised against a peptide corresponding to amino acids near the C-terminus of human SARM.
Target Name	SARM
Accession No.	NP_055892
Formulation	Supplied in PBS containing 0.02% sodium azide.
Storage	Can be stored at -20°C, stable for one year. As with all antibodies care should be taken to avoid repeated freeze thaw cycles. Antibodies should not be exposed to prolonged high temperatures.

Images



Western blot analysis of SARM in Daudi cell lysates with SARM antibody at (A) 0.5, (B) 1, and (C) 2 ug/mL.



Immunocytochemistry staining of Daudi cells using SARM antibody at 2 ug/mL.

Background

Toll-like receptors (TLRs) are signaling molecules that recognize different microbial products during infection and serve as an important link between the innate and adaptive immune responses. SARM (SAM and ARM-containing protein), along with other molecules such as TIRP, TRIF, TIRAP, and

MyD88, is thought to serve as an adaptor protein for the TLRs that allows for the activation of downstream kinases and NF- κ B, and ultimately the expression of proteins involved in host defense. While SARM has not been conclusively shown to associate directly with TLRs, the presence of a Toll-interleukin-1 (TIR) domain in SARM is consistent with a role as a signaling molecule.

Note: This product is for in vitro research use only and is not intended for use in humans or animals.