

ILPIP Antibody

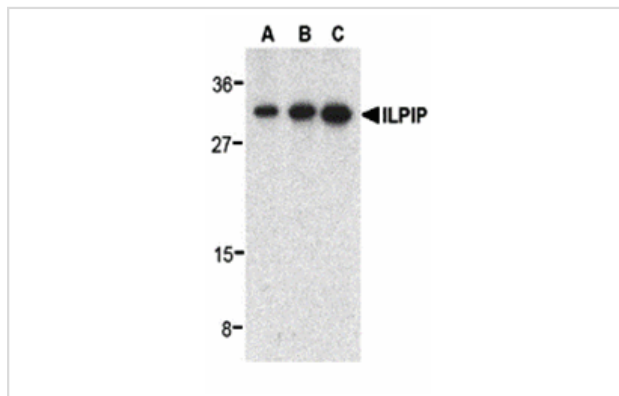
Catalog No: #24211

Orders: order@signalwayantibody.comSupport: tech@signalwayantibody.com

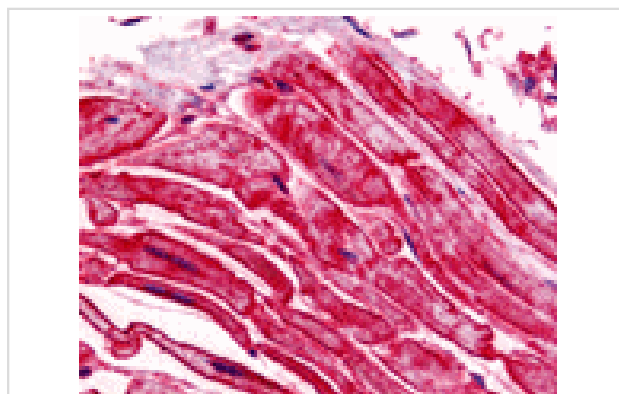
Description

Product Name	ILPIP Antibody
Host Species	Rabbit
Clonality	Polyclonal
Purification	Affinity chromatography purified via peptide column
Applications	E WB IHC
Species Reactivity	Hu
Specificity	Anti-ILPIP is specific for human ILPIP only.
Immunogen Type	Peptide
Immunogen Description	Raised against a synthetic peptide corresponding to amino acids at the C-terminus of human ILPIP.
Target Name	ILPIP
Accession No.	NP_061041
Formulation	Supplied in PBS containing 0.02% sodium azide.
Storage	Can be stored at -20°C, stable for one year. As with all antibodies care should be taken to avoid repeated freeze thaw cycles. Antibodies should not be exposed to prolonged high temperatures.

Images



Western blot analysis of ILPIP in human heart lysate with ILPIP antibody at 0.5 (lane A), 1 (lane B), and 2 (lane C) ug/mL, respectively.



Immunohistochemistry of ILPIP in human heart tissue with ILPIP antibody at 5 ug/mL.

Background

ILPIP (ILP-interacting protein) has recently been shown to interact with XIAP, a member of the IAP (Inhibitor of Apoptosis) protein family. Together, these two proteins synergistically activate the TAK1/JNK1 signal transduction pathway, which acts to protect against the interleukin-1 β converting enzyme of Fas-induced apoptosis. This protein was independently isolated and characterized as polyploidy-associated protein kinase (PAPK), a member of the Ste20/germinal center kinase family that modulates cytoskeletal organization and cell survival, suggesting that its protective role may be a function of its kinase activity. Although two mRNA sequences have been isolated, only the shorter isoform has been observed.

Note: This product is for in vitro research use only and is not intended for use in humans or animals.