

## ILPIP Antibody

Catalog No: #24210

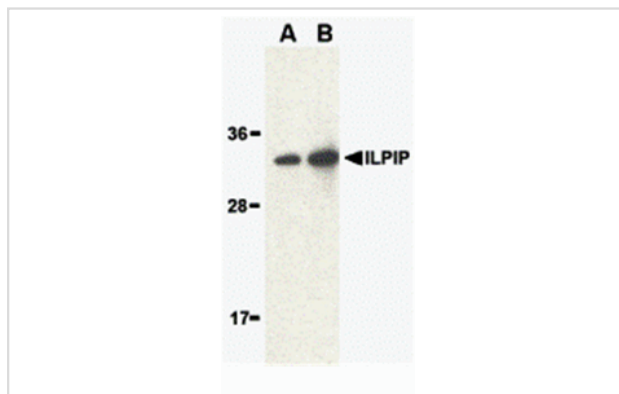
Orders: order@signalwayantibody.com

Support: tech@signalwayantibody.com

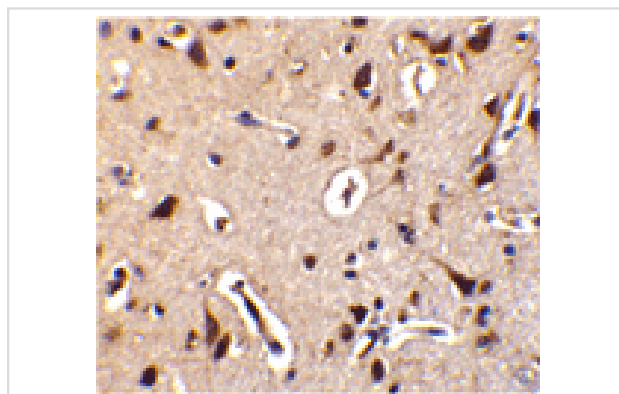
## Description

Product Name	ILPIP Antibody
Host Species	Rabbit
Clonality	Polyclonal
Purification	Affinity chromatography purified via peptide column
Applications	E WB IHC
Species Reactivity	Hu Ms Rt
Immunogen Type	Peptide
Immunogen Description	Raised against a synthetic peptide corresponding to amino acids near the center of human ILPIP.
Target Name	ILPIP
Accession No.	NP_061041
Formulation	Supplied in PBS containing 0.02% sodium azide.
Storage	Can be stored at -20°C, stable for one year. As with all antibodies care should be taken to avoid repeated freeze thaw cycles. Antibodies should not be exposed to prolonged high temperatures.

## Images



Western blot analysis of ILPIP in human brain lysate with ILPIP antibody at (A) 1 and (B) 2 ug/mL.



Immunohistochemistry of ILPIP in human brain tissue with ILPIP antibody at 10 ug/mL.

## Background

ILPIP (ILP-interacting protein) has recently been shown to interact with XIAP, a member of the IAP (Inhibitor of Apoptosis) protein family. Together, these two proteins synergistically activate the TAK1/JNK1 signal transduction pathway, which acts to protect against the interleukin-1 $\beta$  converting

enzyme of Fas-induced apoptosis. This protein was independently isolated and characterized as polyploidy-associated protein kinase (PAPK), a member of the Ste20/germinal center kinase family that modulates cytoskeletal organization and cell survival, suggesting that its protective role may be a function of its kinase activity. Although two mRNA sequences have been isolated, only the shorter isoform has been observed.

---

Note: This product is for in vitro research use only and is not intended for use in humans or animals.