

AID Antibody

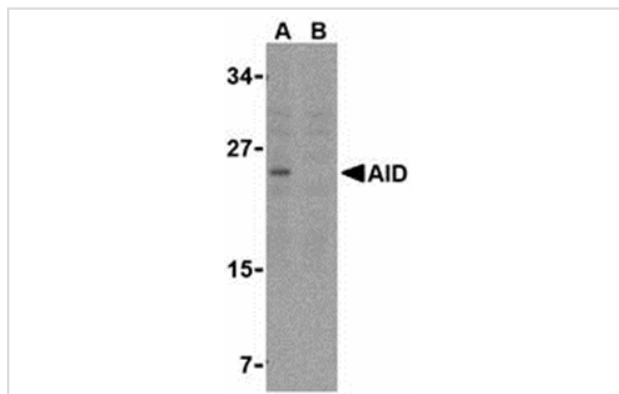
Catalog No: #24184

Orders: order@signalwayantibody.comSupport: tech@signalwayantibody.com

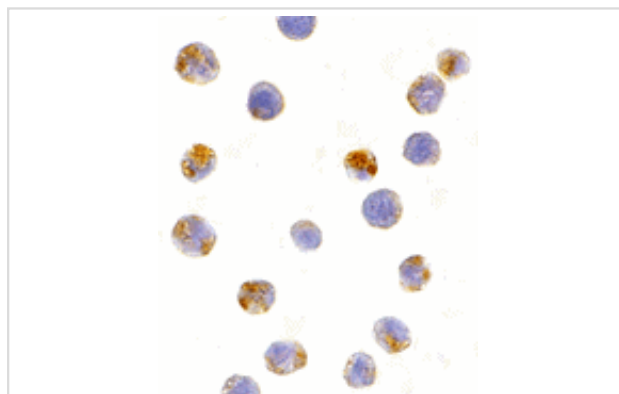
Description

Product Name	AID Antibody
Host Species	Rabbit
Clonality	Polyclonal
Purification	Affinity chromatography purified via peptide column
Applications	E WB ICC
Species Reactivity	Hu Ms
Immunogen Type	Peptide
Immunogen Description	Raised against a peptide corresponding to 14 amino acids near the carboxy terminus of human AID.
Target Name	AID
Accession No.	AAM95402
Formulation	Supplied in PBS containing 0.02% sodium azide.
Storage	Can be stored at -20°C, stable for one year. As with all antibodies care should be taken to avoid repeated freeze thaw cycles. Antibodies should not be exposed to prolonged high temperatures.

Images



Western blot analysis of AID in Ramos whole cell lysate with AID antibody at 2 ug/mL in either the (A) absence or (B) presence of blocking peptide.



Immunocytochemistry of AID in Ramos cells with Ramos antibody at 10 ug/mL.

Background

Activation-induced cytidine deaminase (AID) was initially discovered as a homolog of the apolipoprotein B RNA-editing cytidine deaminase 1 (APOBEC1) that showed cytidine deaminase properties in stimulated B cell lines. It is necessary for somatic hypermutation and class switch

recombination in B cells, but inappropriate or dysregulated expression AID is often found in tumors and B cell neoplasms. Although it is structurally and functionally similar to the APOBEC proteins, it appears unlikely that AID deaminates dC to dU residues in HIV cDNA as does APOBEC3G.

Note: This product is for in vitro research use only and is not intended for use in humans or animals.