

Nudel Antibody

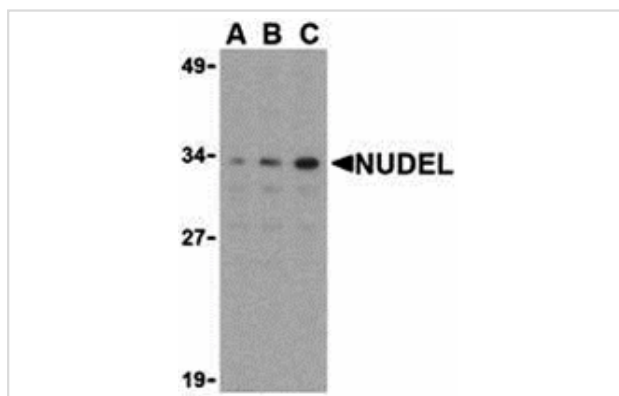
Catalog No: #24163

Orders: order@signalwayantibody.comSupport: tech@signalwayantibody.com

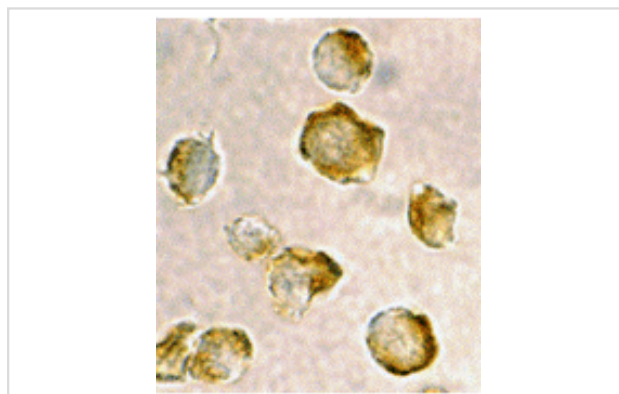
Description

Product Name	Nudel Antibody
Host Species	Rabbit
Clonality	Polyclonal
Purification	Affinity chromatography purified via peptide column
Applications	E WB ICC
Species Reactivity	Hu Ms
Immunogen Type	Peptide
Immunogen Description	Raised against a peptide corresponding to 15 amino acids near the amino terminus of human Nudel.
Target Name	Nudel
Accession No.	AAF97497
Formulation	Supplied in PBS containing 0.02% sodium azide.
Storage	Can be stored at -20°C, stable for one year. As with all antibodies care should be taken to avoid repeated freeze thaw cycles. Antibodies should not be exposed to prolonged high temperatures.

Images



Western blot analysis of Nudel in Jurkat whole cell lysate with Nudel antibody at (A) 0.5, (B) 1, or (C) 2 ug/mL.



Immunocytochemistry of Nudel in Jurkat cells with Nudel antibody at 2 ug/mL.

Background

Nudel was initially discovered as a protein homologous to *Aspergillus* NUDE and that associated with Lis1 and polyprotein complex cytoplasmic dynein, both of which have been linked to neuronal development and migration. It was later shown to be a substrate of cdk5, a kinase known to be

critical during neuronal migration; phosphorylation of Nudel by cdk5 affects its localization in neurons and affects neuritic morphology. It is thought that together with Lis1, Nudel regulates cytoplasmic dynein, a large polyprotein complex, in neuronal migration and mitosis through direct interactions. Similar interactions are thought to also play a role in membrane traffic in other cells as disruption of Nudel expression through RNA interference perturbed normal endomembrane flux and resulted in the fragmentation of the Golgi apparatus.

Note: This product is for in vitro research use only and is not intended for use in humans or animals.