

## Aven Antibody

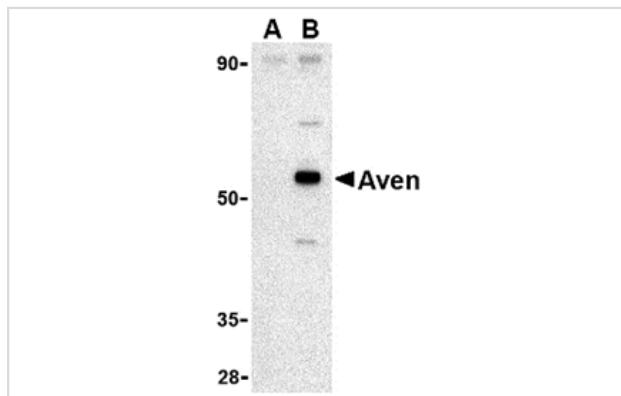
Catalog No: #24135

Orders: [order@signalwayantibody.com](mailto:order@signalwayantibody.com)Support: [tech@signalwayantibody.com](mailto:tech@signalwayantibody.com)

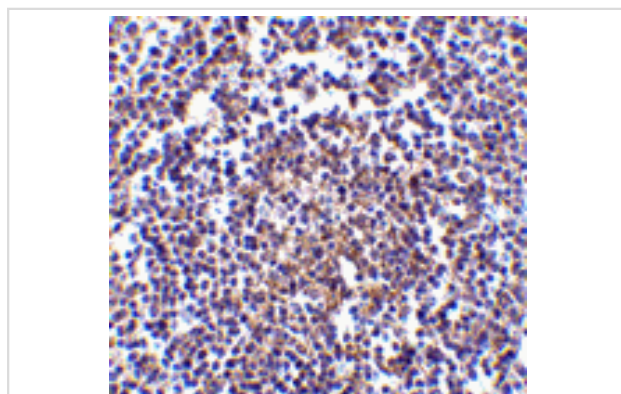
## Description

Product Name	Aven Antibody
Host Species	Rabbit
Clonality	Polyclonal
Purification	Affinity chromatography purified via peptide column
Applications	E WB IHC
Species Reactivity	Hu Ms Rt
Immunogen Type	Peptide
Immunogen Description	Raised against a 14 amino acid peptide from near the carboxy terminus of human Aven.
Target Name	Aven
Other Names	Apoptosis caspase activation inhibitor
Accession No.	NP_065104
Formulation	Supplied in PBS containing 0.02% sodium azide.
Storage	Can be stored at -20°C, stable for one year. As with all antibodies care should be taken to avoid repeated freeze thaw cycles. Antibodies should not be exposed to prolonged high temperatures.

## Images



Western blot analysis of Aven in Raji cell lysate with Aven antibody at 1 ug/mL in (A) the presence and (B) the absence of blocking peptide.



Immunohistochemistry of Aven in human spleen tissue with Aven antibody at 5 ug/mL.

## Background

Apoptosis plays a major role in normal organism development, tissue homeostasis, and removal of damaged cells. Disruption of this process has been implicated in a variety of diseases such as cancer. Aven is a recently discovered protein that blocks apoptosis induced by Apaf-1 and caspase-9. It is thought that Aven functions by binding to Bcl-xL, an antiapoptotic member of the Bcl-2 family, and to Apaf-1, possibly interfering with the ability of Apaf-1 to self-associate, suggesting that Aven impedes Apaf-1-mediated caspase activation. Higher levels of Aven mRNA are seen in patients with acute leukemia than in control patients, suggesting that Aven may be useful as a prognostic indicator in leukemia patients.

---

Note: This product is for in vitro research use only and is not intended for use in humans or animals.