

PHLP antibody

Catalog No: #23047

Orders: order@signalwayantibody.comSupport: tech@signalwayantibody.com

Description

Product Name	PHLP antibody
Host Species	Rabbit
Clonality	Polyclonal
Purification	Purified by antigen-affinity chromatography.
Applications	WB IF
Species Reactivity	Hu
Immunogen Type	Recombinant protein
Immunogen Description	Recombinant protein fragment contain a sequence corresponding to a region within amino acids 1 and 214 of PHLP
Target Name	PHLP
Accession No.	NCBI Gene ID: 5082NCBI mRNA#: NM_005388NCBI Protein#: NP_005379
Formulation	Supplied in 0.1M Tris-buffered saline with 10% Glycerol (pH7.0). 0.01% Thimerosal was added as a preservative.
Storage	Store at -20°C for long term preservation (recommended). Store at 4°C for short term use.

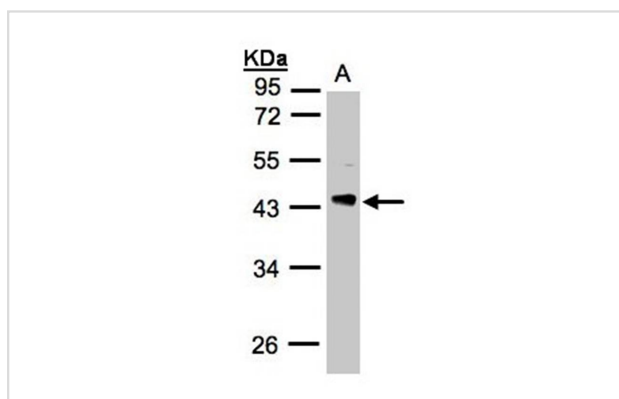
Application Details

Predicted MW: 34kd

Western blotting: 1:500-1:3000

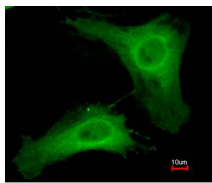
Immunofluorescence: 1:100-1:200

Images

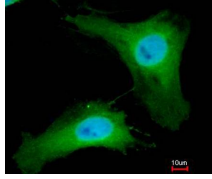


Sample(30 ug whole cell lysate)
A: H1299
10% SDS PAGE
Primary antibody diluted at 1: 3000

Immunofluorescence analysis of paraformaldehyde-fixed HeLa, using PHLP antibody at 1: 200 dilution.



Merged with DNA probe



Background

Phosducin-like protein is a putative modulator of heterotrimeric G proteins. The protein shares extensive amino acid sequence homology with phosducin, a phosphoprotein expressed in retina and pineal gland. Both phosducin-like protein and phosphoducin have been shown to regulate G-protein signaling by binding to the beta-gamma subunits of G proteins. [provided by RefSeq]

Note: This product is for in vitro research use only and is not intended for use in humans or animals.