

GAPDH antibody

Catalog No: #23001



Orders: order@signalwayantibody.com

Support: tech@signalwayantibody.com

Description

Product Name	GAPDH antibody
Host Species	Rabbit
Clonality	Polyclonal
Purification	Purified by antigen-affinity chromatography.
Applications	WB IHC IF
Species Reactivity	Hu
Immunogen Type	Recombinant protein
Immunogen Description	Recombinant protein fragment contain a sequence corresponding to a region within amino acids 1 and 323 of GAPDH
Target Name	GAPDH
Other Names	G3PD; GAPD; MGC88685
Accession No.	NCBI Gene ID: 2597NCBI mRNA#: NM_002046NCBI Protein#: NP_002037
Formulation	Supplied in 1XPBS, 1%BSA, 20% Glycerol (pH7.0). 0.01% Thimerosal was added as a preservative.
Storage	Store at -20°C for long term preservation (recommended). Store at 4°C for short term use.

Application Details

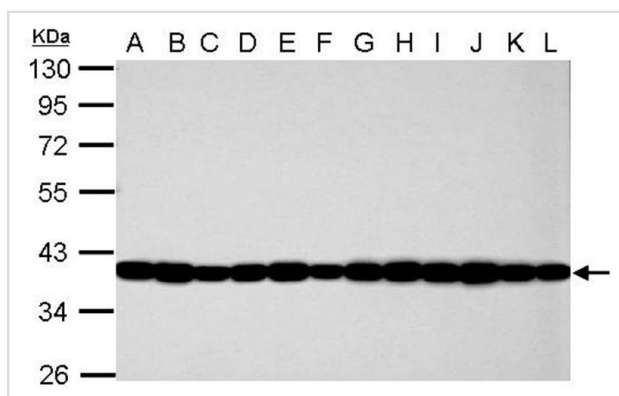
Predicted MW: 36kd

Western blotting: 1:500-1:3000

Immunohistochemistry: 1:50-1:500

Immunofluorescence: 1:100-1:200

Images

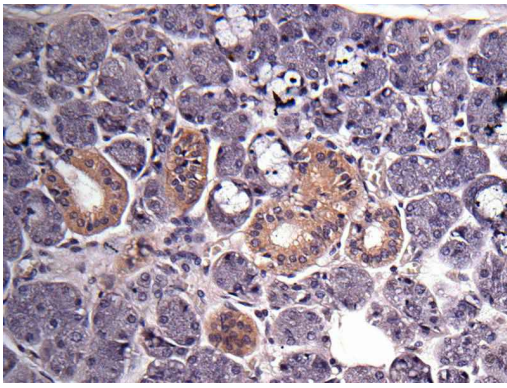


Sample (30 ug of whole cell lysate)

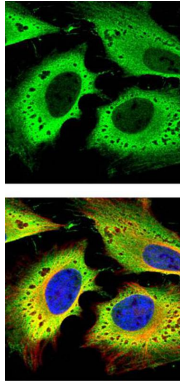
- A: Jurkat
- B: Raji
- C: 293T
- D: A431
- E: HeLa
- F: HepG2
- G: H1299
- H: HCT116
- I: MCF-7
- J: NT2D1
- K: PC-3
- L: U87-MG

10% SDS PAGE

Primary antibody diluted at 1: 10000



Immunohistochemical analysis of Salivary gland cancer, using GAPDH antibody at 1: 500 dilution.



Confocal immunofluorescence analysis (Olympus FV10i) of paraformaldehyde-fixed HeLa, using GAPDH antibody (green) at 1: 500 dilution and alpha-tubulin antibody (red) at 1: 2000.

Background

The product of this gene catalyzes an important energy-yielding step in carbohydrate metabolism, the reversible oxidative phosphorylation of glyceraldehyde-3-phosphate in the presence of inorganic phosphate and nicotinamide adenine dinucleotide (NAD). The enzyme exists as a tetramer of identical chains. Many pseudogenes similar to this locus are present in the human genome. [provided by RefSeq]

Note: This product is for in vitro research use only and is not intended for use in humans or animals.