

## bisphosphoglycerate mutase antibody

Catalog No: #22970



Orders: order@signalwayantibody.com

Support: tech@signalwayantibody.com

## Description

Product Name	bisphosphoglycerate mutase antibody
Host Species	Rabbit
Clonality	Polyclonal
Purification	Purified by antigen-affinity chromatography.
Applications	WB IF
Species Reactivity	Hu
Immunogen Type	Recombinant protein
Immunogen Description	Recombinant protein fragment contain a sequence corresponding to a region within amino acids 1 and 216 of Human BPGM
Target Name	bisphosphoglycerate mutase
Accession No.	NCBI Gene ID: 669NCBI mRNA#: NM_001724NCBI Protein#: NP_001715
Formulation	Supplied in 0.1M Tris-buffered saline with 10% Glycerol (pH7.0). 0.01% Thimerosal was added as a preservative.
Storage	Store at -20°C for long term preservation (recommended). Store at 4°C for short term use.

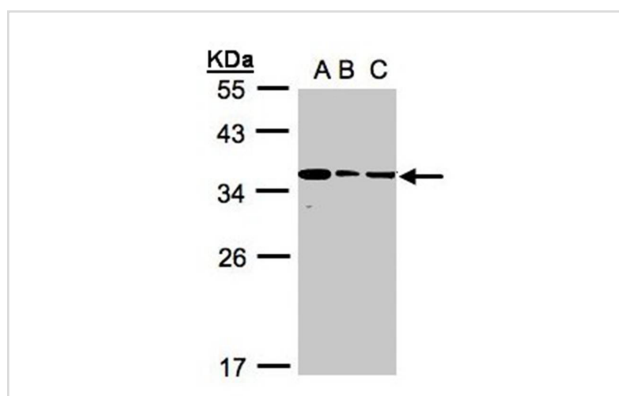
## Application Details

Predicted MW: 30kd

Western blotting: 1:500-1:3000

Immunofluorescence: 1:100-1:200

## Images



Sample(30 ug whole cell lysate)

A: 293T

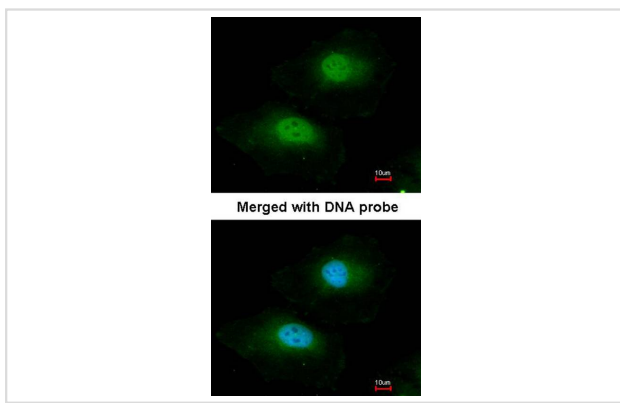
B: A431

C: H1299

12% SDS PAGE

Primary antibody diluted at 1: 1000

Immunofluorescence analysis of paraformaldehyde-fixed HeLa, using BPGM antibody at 1: 100 dilution.



---

Note: This product is for in vitro research use only and is not intended for use in humans or animals.