

# Actin antibody

Catalog No: #22959



Orders: [order@signalwayantibody.com](mailto:order@signalwayantibody.com)

Support: [tech@signalwayantibody.com](mailto:tech@signalwayantibody.com)

## Description

Product Name	Actin antibody
Host Species	Rabbit
Clonality	Polyclonal
Purification	Purified by antigen-affinity chromatography.
Applications	WB IHC
Species Reactivity	Hu
Immunogen Type	Recombinant protein
Immunogen Description	Recombinant protein fragment contain a sequence corresponding to a region within amino acids 1 and 119 of human ACTG1
Target Name	Actin
Accession No.	NCBI Gene ID: 71NCBI mRNA#: NM_001614NCBI Protein#: NP_001605
Formulation	Supplied in 0.1M Tris-buffered saline with 10% Glycerol (pH7.0). 0.01% Thimerosal was added as a preservative.
Storage	Store at -20°C for long term preservation (recommended). Store at 4°C for short term use.

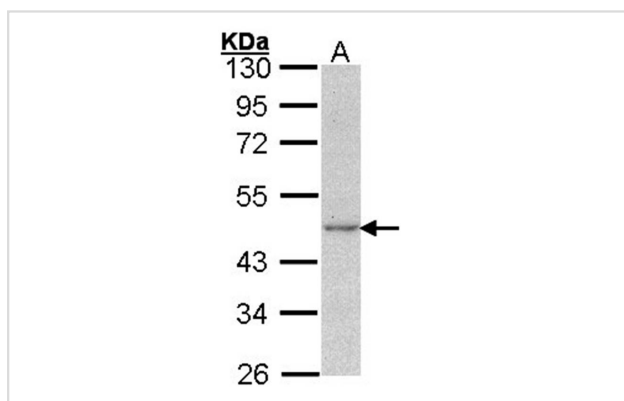
## Application Details

Predicted MW: 42kd

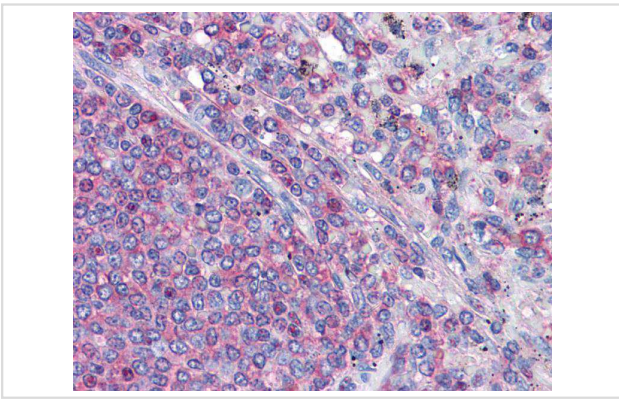
Western blotting: 1:500-1:3000

Immunohistochemistry: 1:100-1:250

## Images



Sample (30 ug of whole cell lysate)  
 A: A431  
 10% SDS PAGE  
 Primary antibody diluted at 1: 1000



Immunohistochemical analysis of paraffin-embedded Spleen, using gamma Actin antibody(10 ug/ml).

## Background

Actins are highly conserved proteins that are involved in various types of cell motility, and maintenance of the cytoskeleton. In vertebrates, three main groups of actin isoforms, alpha, beta and gamma have been identified. The alpha actins are found in muscle tissues and are a major constituent of the contractile apparatus. The beta and gamma actins co-exist in most cell types as components of the cytoskeleton, and as mediators of internal cell motility. Actin, gamma 1, encoded by this gene, is a cytoplasmic actin found in nonmuscle cells. [provided by RefSeq]

Note: This product is for in vitro research use only and is not intended for use in humans or animals.