

## CAD antibody

Catalog No: #22935

Orders: [order@signalwayantibody.com](mailto:order@signalwayantibody.com)Support: [tech@signalwayantibody.com](mailto:tech@signalwayantibody.com)

## Description

Product Name	CAD antibody
Host Species	Rabbit
Clonality	Polyclonal
Purification	Purified by antigen-affinity chromatography.
Applications	WB IHC
Species Reactivity	Hu
Immunogen Type	Recombinant protein
Immunogen Description	Recombinant protein fragment contain a sequence corresponding to a region within amino acids 1625 and 1900 of Human CAD
Target Name	CAD
Accession No.	NCBI Gene ID: 790NCBI mRNA#: NM_004341NCBI Protein#: NP_004332
Formulation	Supplied in 0.1M Tris-buffered saline with 10% Glycerol (pH7.0). 0.01% Thimerosal was added as a preservative.
Storage	Store at -20°C for long term preservation (recommended). Store at 4°C for short term use.

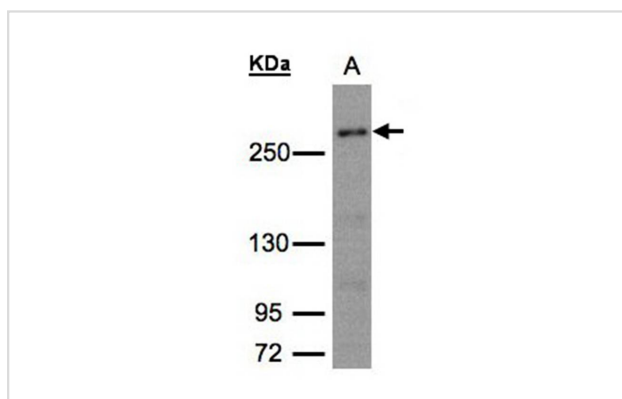
## Application Details

Predicted MW: 243kd

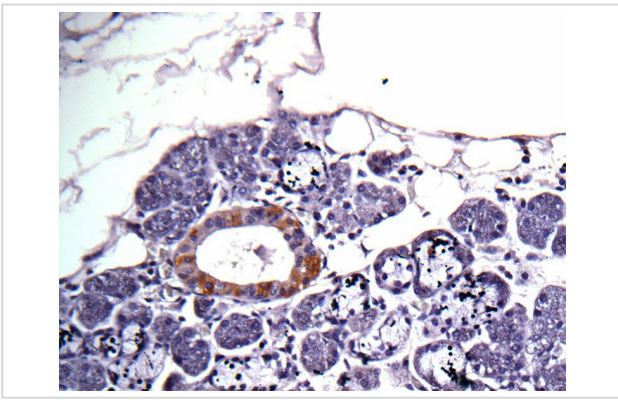
Western blotting: 1:500-1:3000

Immunohistochemistry: 1:100-1:250

## Images



Sample (30ug whole cell lysate)  
A: 293T whole cell lysate  
5% SDS PAGE  
Primary antibody diluted at 1: 1500



Immunohistochemical analysis of Salivary gland cancer, using CAD antibody at 1: 100 dilution.

## Background

The de novo synthesis of pyrimidine nucleotides is required for mammalian cells to proliferate. This gene encodes a trifunctional protein which is associated with the enzymatic activities of the first 3 enzymes in the 6-step pathway of pyrimidine biosynthesis: carbamoylphosphate synthetase (CPS II), aspartate transcarbamoylase, and dihydroorotase. This protein is regulated by the mitogen-activated protein kinase (MAPK) cascade, which indicates a direct link between activation of the MAPK cascade and de novo biosynthesis of pyrimidine nucleotides. [provided by RefSeq]

Note: This product is for in vitro research use only and is not intended for use in humans or animals.