

Villin antibody

Catalog No: #22921



Orders: order@signalwayantibody.com

Support: tech@signalwayantibody.com

Description

Product Name	Villin antibody
Host Species	Rabbit
Clonality	Polyclonal
Purification	Purified by antigen-affinity chromatography.
Applications	WB IHC IF
Species Reactivity	Hu
Immunogen Type	Recombinant protein
Immunogen Description	Recombinant protein fragment contain a sequence corresponding to a region within amino acids 7 and 256 of Villin
Target Name	Villin
Accession No.	NCBI Gene ID: 7429NCBI mRNA#: NM_007127NCBI Protein#: NP_009058
Formulation	Supplied in 0.1M Tris-buffered saline with 10% Glycerol (pH7.0). 0.01% Thimerosal was added as a preservative.
Storage	Store at -20°C for long term preservation (recommended). Store at 4°C for short term use.

Application Details

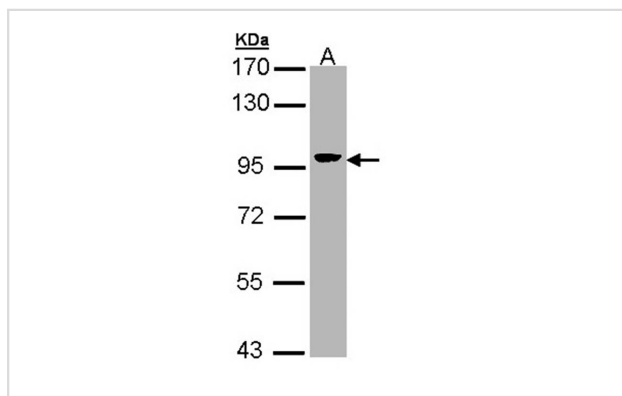
Predicted MW: 93kd

Western blotting: 1:500-1:3000

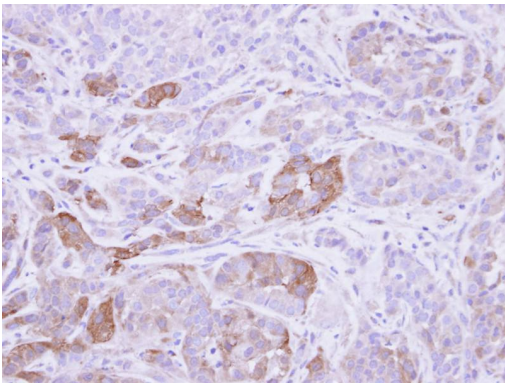
Immunohistochemistry: 1:100-1:500

Immunofluorescence: 1:100-1:200

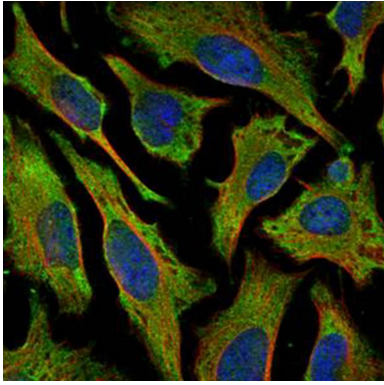
Images



Sample (30 ug of whole cell lysate)
 A: Hep G2
 7.5% SDS PAGE
 Primary antibody diluted at 1: 5000



Immunohistochemical analysis of paraffin-embedded A549 xenograft, using Villin antibody at 1: 500 dilution.



Confocal immunofluorescence analysis (Olympus FV10i) of methanol-fixed HeLa, using Villin antibody (Green) at 1: 500 dilution and alpha-tubulin antibody (Red) at 1: 2000.

Background

This gene encodes a member of a family of calcium-regulated actin-binding proteins. This protein represents a dominant part of the brush border cytoskeleton which functions in the capping, severing, and bundling of actin filaments. Two mRNAs of 2.7 kb and 3.5 kb have been observed; they result from utilization of alternate poly-adenylation signals present in the terminal exon. [provided by RefSeq]

Note: This product is for in vitro research use only and is not intended for use in humans or animals.