

FAST antibody

Catalog No: #22837



Orders: order@signalwayantibody.com

Support: tech@signalwayantibody.com

Description

Product Name	FAST antibody
Host Species	Rabbit
Clonality	Polyclonal
Purification	Affinity purified by Protein A.
Applications	WB IHC IF
Species Reactivity	Hu Ms
Immunogen Type	Recombinant protein
Immunogen Description	Recombinant protein fragment contain a sequence corresponding to a region within amino acids 346 and 521 of FAST
Target Name	FAST
Other Names	FAST
Accession No.	NCBI Gene ID: 10922NCBI mRNA#: NM_006712NCBI Protein#: NP_006703
Formulation	Supplied in 0.1M Tris-buffered saline with 10% Glycerol (pH7.0). 0.01% Thimerosal was added as a preservative.
Storage	Store at -20°C for long term preservation (recommended). Store at 4°C for short term use.

Application Details

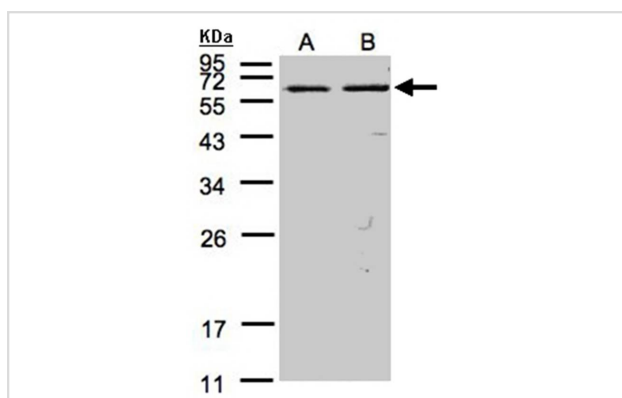
Predicted MW: 61kd

Western blotting: 1:500-1:3000

Immunohistochemistry: 1:100-1:250

Immunofluorescence: 1:100-1:200

Images



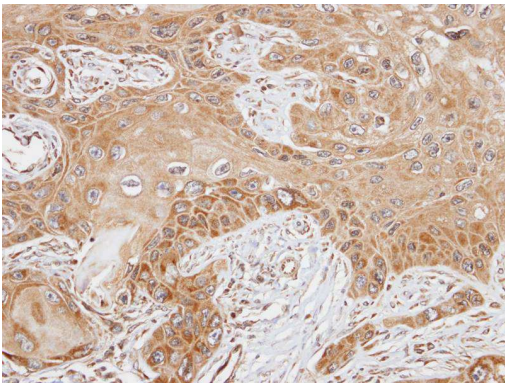
Sample(30 ug of whole cell lysate)

A: MOLT4

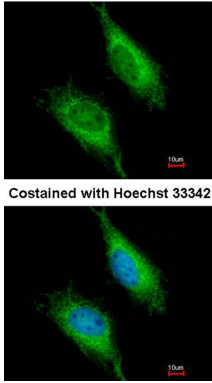
B: Raji

12% SDS PAGE

Primary antibody diluted at 1: 500



Immunohistochemical analysis of paraffin-embedded SCC15 xenograft, using FAST antibody at 1: 100 dilution.



Immunofluorescence analysis of methanol-fixed HeLa, using FAST antibody at 1: 200 dilution.

Background

The protein encoded by this gene is a member of the serine/threonine protein kinase family. This kinase was shown to be activated rapidly during Fas-mediated apoptosis in Jurkat cells. In response to Fas receptor ligation, it phosphorylates TIA1, an apoptosis-promoting nuclear RNA-binding protein. The encoded protein is a strong inducer of lymphocyte apoptosis. Two transcript variants encoding different isoforms have been found for this gene. Other variants exist, but their full-length natures have not yet been determined. [provided by RefSeq]

Note: This product is for in vitro research use only and is not intended for use in humans or animals.